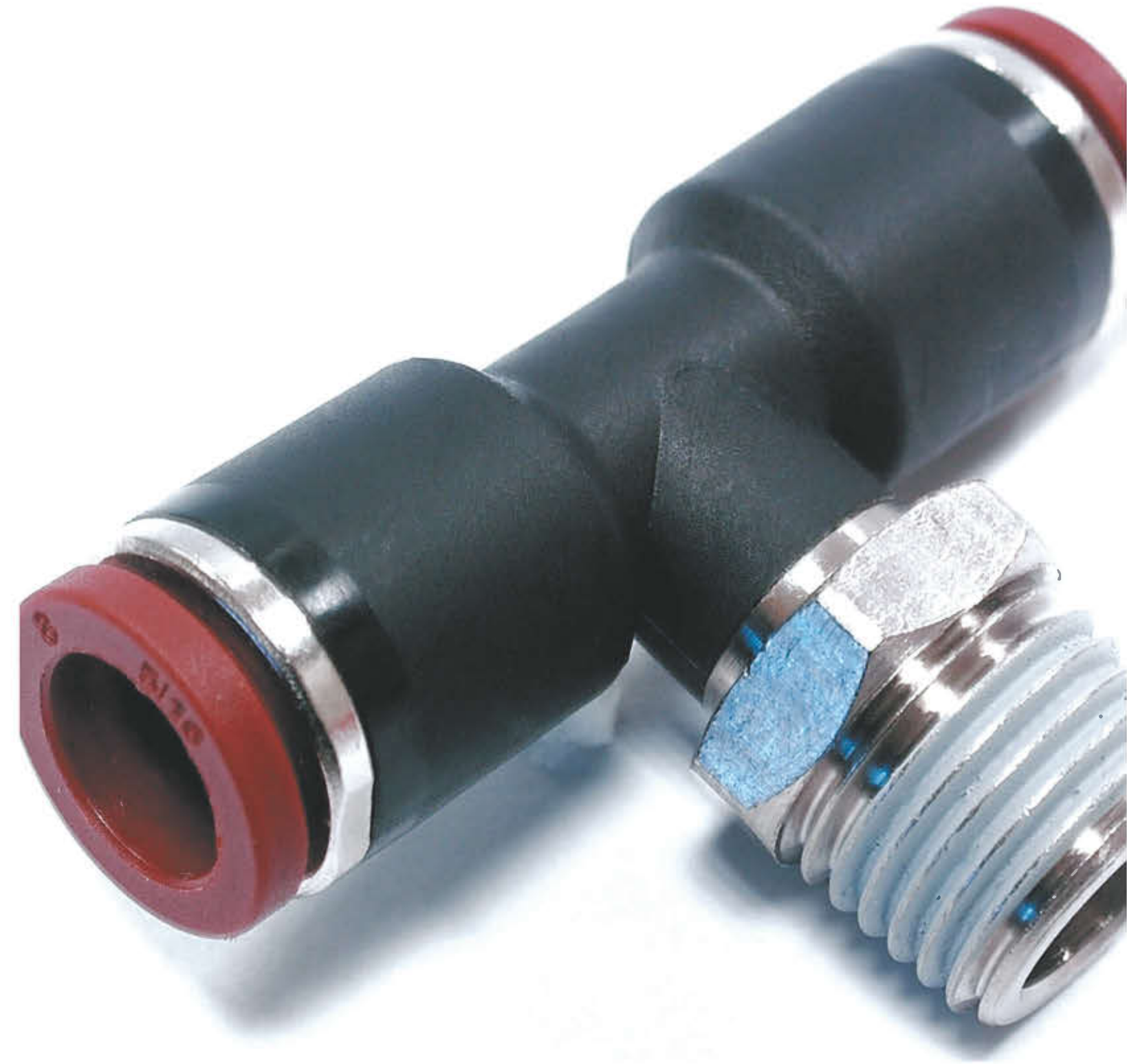


**Italy**  
Australia  
Austria  
Benelux  
Bulgaria  
Brazil  
P. R. China  
Denmark  
Egypt  
France  
Germany  
Greece  
Iceland  
India  
Iran  
Israel  
Malaysia  
Mexico  
Poland  
Portugal  
Russia  
Spain  
South Africa  
Sweden  
Switzerland  
Taiwan  
Thailand  
Turkey  
United Kingdom  
USA

SALES ORGANIZATION



STAMPOTECNICA s.r.l.  
via Martiri di Cervarolo, 5 • 42015 Correggio (RE) • ITALY  
tel. +39 0522 641840 r.a. • fax +39 0522 694312 • [www.aircomp.it](http://www.aircomp.it) • [info@aircomp.it](mailto:info@aircomp.it)

Catalogo Raccordi 2011  
2011 Fittings Catalogue



Il presente documento è parte integrante di una più ampia e completa documentazione orientata al settore dell'automazione pneumatica, comprendente un catalogo "Trattamento Aria Compressa", "Cilindri Pneumatici" e "Valvole".

The present catalogue is integral part of our more comprehensive and complete sales literature aimed at the pneumatic automation sector, including our catalogue "Air preparation units", "Pneumatic Cylinders" and "Valves".



I dati riportati nel presente Catalogo non sono impegnativi e possono pertanto subire, senza preavviso, modifiche suggerite dal continuo miglioramento tecnico e costruttivo.

The overall dimensions and technical information are provided solely for informative reasons and may be subject to change without notice.

STAMPOTECNICA è certificata secondo il sistema di qualità **ISO EN 9001:2008**.

Da sempre la soddisfazione del Cliente è obiettivo primario della politica aziendale e punto di riferimento nella pianificazione di ogni strategia. Tutti i processi aziendali sono stati elaborati, con il coinvolgimento e l'impegno dell'intera organizzazione, per garantire massima professionalità e massima qualità dei prodotti e dei servizi.

STAMPOTECNICA is certified according to **ISO EN 9001:2008** quality standards. Customer satisfaction has always been the primary goal of our corporate policy and a reference point when planning every strategy.

Each company process has been worked out, involving and engaging our whole organization, in order to guarantee utmost expertise together with utmost quality of products and service.



IT-72  
UNI EN ISO 9001:2008

*Wind of excellence*

# INDICE INDEX



Istruzioni generali  
General instructions

**2**



Raccordi Automatici  
One Touch Fittings

**3**



Regolatori di Flusso  
Speed Controllers

**20**



Valvole Manuali a 3 vie  
Hand Valves

**23**



Rubinetti  
Ball Valves

**25**



Valvole Ausiliarie  
Auxiliary Valves

**28**



Raccordi Tradizionali in Ottone  
Brass Standard Fittings

**29**



Raccordi a Calzamento  
Quick fittings

**38**



Silenziatori  
Silencers

**44**



Manometri  
Gauges

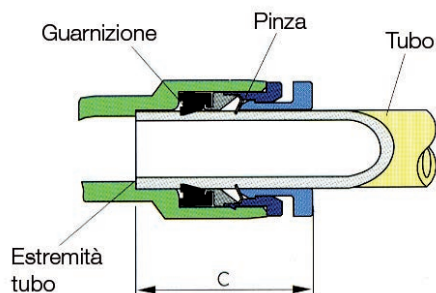
**46**



tab. 1

SIZE	POLYURETHANE TUBE	NYLON TUBE
Ø 3mm	± 0.10	± 0.08
Ø 4mm	± 0.10	± 0.08
Ø 6mm	± 0.12	± 0.10
Ø 8mm	± 0.12	± 0.10
Ø 10mm	± 0.15	± 0.12
Ø 12mm	± 0.15	± 0.12
Ø 16mm	± 0.15	± 0.15

dis. 1



## Istruzioni generali – precauzioni d'impiego

Leggere attentamente le istruzioni, precauzioni e contenute nel presente catalogo. Attenersi attentamente le caratteristiche tecniche nonché alle pressioni massime e le temperature di esercizio presenti nelle relative tabelle. I raccordi contenuti nel presente catalogo NON possono essere utilizzati per applicazioni diverse da quelle indicate.



### ATTENZIONE

Prima d'intervenire ASSICURASI che NON ci sia pressione nell'impianto.

### Raccordi Automatici

Non utilizzare i raccordi Aircomp nei seguenti impieghi:

- applicazioni con gas corrosivi, infiammabili, soluzioni chimiche ecc.
- applicazioni con eccessive vibrazioni, shock, rotazioni e strappi.
- per la compatibilità chimica siete pregati di contattare l'ufficio tecnico Aircomp.

Non smontare e rimontare le singole parti del raccordo.

Assicurarsi che il tubo di collegamento rispetti le misure della TABELLA 1, in caso contrario si potrebbero riscontrare perdite o malfunzionamenti.

### Precauzioni nel montaggio del tubo

Assicurarsi che la sezione del tubo sia tagliata ad angolo retto

Assicurarsi che non ci siano danneggiamenti all'esterno del tubo

Per l'applicazione e la rimozione del tubo prestare attenzione alle seguenti informazioni:

l'inserimento del tubo nel raccordo automatico Aircomp si effettua in 2 fasi

- 1° fase inserimento del tubo sulla pinza
- 2° fase inserimento del tubo sulla guarnizione fino all'estremità del raccordo (DIS.1).

**Nel montaggio del tubo assicurarsi che venga eseguita anche la 2° fase.**

**Aircomp si riserva il diritto di modificare senza preavviso i dati tecnici del presente catalogo per effetto di miglioramenti tecnici e/o esigenze di mercato.**

## General instructions – using precautions

Read carefully the instructions, precautions and contents of this present catalogue.

Follow carefully the technical specifications and the maximum pressures and temperatures reported in the tables.

The fittings present in this catalogue may NOT be used for other applications which are different to those described on this document.



### ATTENTION

Before repairing or checking equipment, remove air pressure first.

### Push-in fittings

Never use the Aircomp fittings on the following environment:

- Place consisting of corrosive gas, inflammable, chemical solutions etc.
- Place of excessive vibration, shocks, rotation and curve.
- For chemical compatibility please contact the Aircomp sales department.

Never disassemble or assemble the single fitting parts

Make sure that the connection hose corresponds to the measures reported on the TAB. 1, otherwise it should be possible to have leaking or malfunctions.

### Cautions in the hose application

Be sure to confirm that the hose section is cut 90°

Be sure that there are no damages outside of the hose

For fitting and removing the hose pay attention to the two following information:

The hose insertion into the automatic Aircomp fitting happens in two phases:

- 1° hose insertion on the lock claws pliers
- 2° complete hose insertion into the fitting (FIG.1).

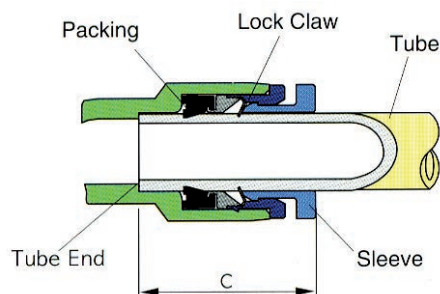
**During the hose insertion make sure that the second step has been acquired.**

**Aircomp reserves the right to modify without any notice the technical data of this catalogue as a result of technical improvements and/or market needs.**

tab. 1

SIZE	POLYURETHANE TUBE	NYLON TUBE
Ø 3mm	± 0.10	± 0.08
Ø 4mm	± 0.10	± 0.08
Ø 6mm	± 0.12	± 0.10
Ø 8mm	± 0.12	± 0.10
Ø 10mm	± 0.15	± 0.12
Ø 12mm	± 0.15	± 0.12
Ø 16mm	± 0.15	± 0.15

fig. 1





### Dati tecnici - Technical data

Applicazioni - Applications	aria compressa/vuoto - compressed air/vacuum
Fluido - Fluid	aria (no altri fluidi) - air (no other gases or liquids)
Pressione di lavoro - Working pressure	0 - 16 bar
Depressione - Vacuum	-750 mmHg (10 Torr)
Range di temperatura - Temperature range	-20 ÷ 80 °C
Tubi consigliati - Recommended hoses	Nylon, Poliuretano - Nylon, Polyurethane

### Guida alle referenze Guide to references

301 . 01 . 08 . 14

#### Serie Line

301 = Raccordo conico  
Conical fitting  
Raccordo intermedio  
Intermediate fitting

302 = Raccordo cilindrico  
Cylindrical fitting

#### Tipo di raccordo Fitting type

Consultare le tabelle alle  
pagine che seguono  
Please check it in following  
pages

#### Filetto Thread Size

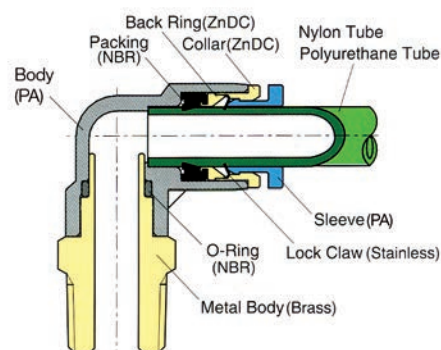
18 = 1/8  
14 = 1/4  
38 = 3/8  
12 = 1/2  
M5 = M5

#### ∅ Tubo Tube diameter

04 = tubo 4 mm  
4mm tube  
06 = tubo 6 mm  
6mm tube  
08 = tubo 8 mm  
8mm tube  
10 = tubo 10 mm  
10mm tube  
12 = tubo 12 mm  
12mm tube

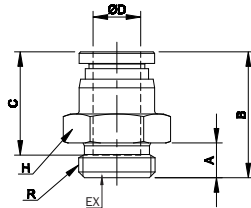
I raccordi di collegamento automatici in tecnopolimero Aircomp permettono il collegamento istantaneo dei tubi flessibili di diverse tipologie. Sono disponibili nella versione filettata conica preteflonata, cilindrica e nella versione di congiunzione (tubo/tubo).

The technopolymer Aircomp push-in fittings allow a fast connections of different flexible hoses types. These fittings are available in different tread versions: conical with teflon, cylindrical and intermediate (hose/hose).



### 302.01

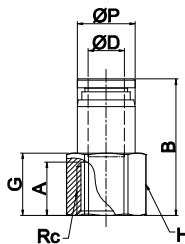
Maschio dritto automatico cilindrico  
Straight male



CODICE-CODE	ØD	R	A	B	H1	EX	Bag Qty
302.01.04.M5	4	M5	4	20,1	8	2	10
302.01.04.18		G1/8	5	18,4	13	3	10
302.01.04.14		G1/4	6	18,1	16	3	10
302.01.06.M5	6	M5	4	21,8	11	2	10
302.01.06.18		G1/8	5	23,1	13	4	10
302.01.06.14		G1/4	6	19,8	16	4	10
302.01.08.18	8	G1/8	5	26	13	5	10
302.01.08.14		G1/4	6	21,7	16	6	10
302.01.08.38		G3/8	7	22,7	20	6	10
302.01.10.14	10	G1/4	6	28,3	16	6	10
302.01.10.38		G3/8	7	24,3	20	8	10
302.01.10.12		G1/2	8,5	24,8	24	8	5
302.01.12.14	12	G1/4	6	32,4	19	6	5
302.01.12.38		G3/8	7	32,4	20	9	5
302.01.12.12		G1/2	8,5	28,9	24	10	5

### 302.23

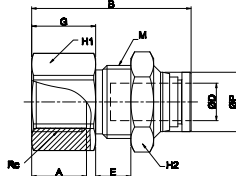
Femmina dritta automatica cilindrica  
Straight female



CODICE-CODE	ØD	R	ØP	G	A	B	H	Bag Qty
302.23.04.18	4	G1/8	8,8	11	9	24,4	13	10
302.23.04.14		G1/4	8,8	14	12	27,4	16	10
302.23.06.18	6	G1/8	11	11	9	25,4	13	10
302.23.06.14		G1/4	11	14	12	28,4	16	10
302.23.08.18	8	G1/8	13	10	9	27,7	13	10
302.23.08.14		G1/4	13	14	12	30,7	16	10
302.23.08.38		G3/8	13	15	13	31,7	19	10
302.23.10.14	10	G1/4	15,5	13	12	32,4	16	10
302.23.10.38		G3/8	15,5	15	13	33,4	19	5
302.23.10.12		G1/2	15,5	18	16	36,4	24	5
302.23.12.14	12	G1/4	18,8	12	12	35,4	19	5
302.23.12.38		G3/8	18,8	15	13	36,4	19	5
302.23.12.12		G1/2	18,8	18	16	39,4	24	5

### 302.20

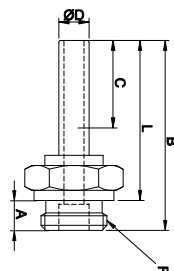
Femmina dritta passap. Aut. Cilindrica  
Straight bulkhead female



CODICE-CODE	ØD	R	ØP	M	G	A	B	E	H1	H2	Bag Qty
302.20.04.18	4	G1/8	8,8	M12X1.0	11	9	25,1	3,4	14	14	10
302.20.04.14		G1/4	8,8	M12X1.0	14	12	28,1	3,4	16	14	10
302.20.06.18	6	G1/8	11	M14X1.0	9	9	26,3	6	16	17	10
302.20.06.14		G1/4	11	M14X1.0	14	12	31,3	6	16	17	10
302.20.08.18	8	G1/8	13	M16X1.0	8	9	28,9	7,7	19	19	10
302.20.08.14		G1/4	13	M16X1.0	14	12	34,9	7,7	19	19	10
302.20.08.38		G3/8	13	M16X1.0	15	13	35,9	7,7	19	19	10
302.20.10.14	10	G1/4	15,5	M20X1.0	13	12	32,3	5,7	22	24	5
302.20.10.38		G3/8	15,5	M20X1.0	15	13	34,3	5,7	22	24	5
302.20.10.12		G1/2	15,5	M20X1.0	18	16	37,3	5,7	24	24	5
302.20.12.14	12	G1/4	18,8	M22X1.0	12	12	35,4	8,2	24	26	5
302.20.12.38		G3/8	18,8	M22X1.0	14	13	37,4	8,2	24	26	5
302.20.12.12		G1/2	18,8	M22X1.0	18	16	41,4	8,2	24	26	5

### 302.47

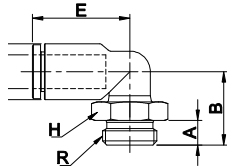
Codolo maschio cilindrico  
Plug-in male



CODICE-CODE	Ø D	R	A	B	L	C	Bag Qty
302.47.04.M5	4	M5	4	36,9	32,9	16	10
302.47.04.18		G1/8	5	31	26	16	10
302.47.04.14		G1/4	6	33	27	16	10
302.47.06.M5	6	M5	4	41,9	37,9	17	10
302.47.06.18		G1/8	5	37	32	17	10
302.47.06.14		G1/4	6	38	32	17	10
302.47.08.18	8	G1/8	5	46	41	18,5	10
302.47.08.14		G1/4	6	41	35	18,5	10
302.47.08.38		G3/8	7	41	34	18,5	10
302.47.10.14	10	G1/4	6	51	45	21	5
302.47.10.38		G3/8	7	44	37	21	5
302.47.10.12		G1/2	8,5	46,5	38	21	5
302.47.12.14	12	G1/4	6	57,5	51,5	22,5	5
302.47.12.38		G3/8	7	58	51	22,5	5
302.47.12.12		G1/2	8,5	51,5	43	22,5	5

### 302.02

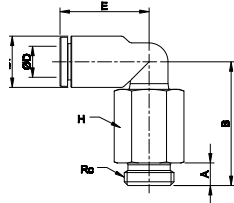
Curve 90° automatica cilindrica  
Elbow male



CODICE-CODE	ØD	R	ØP	A	B	E	H	Bag Qty
302.02.04.M5	4	M5	9	4	14,6	17,1	9	10
302.02.04.18		G1/8	9	5	14,6	17,1	13	10
302.02.04.14		G1/4	9	6	15,3	17,1	16	10
302.02.06.M5	6	M5	11,2	4	15,7	18	9	10
302.02.06.18		G1/8	11,2	5	15,7	18	13	10
302.02.06.14		G1/4	11,2	6	16,4	18	16	10
302.02.08.18	8	G1/8	13,6	5	19,6	23,6	13	10
302.02.08.14		G1/4	13,6	6	17,8	23,6	16	10
302.02.08.38		G3/8	13,6	7	18,8	23,6	20	10
302.02.10.14	10	G1/4	16,3	6	22,6	25	16	5
302.02.10.38		G3/8	16,3	7	21,1	25	20	5
302.02.10.12		G1/2	16,3	8,5	22,6	25	24	5
302.02.12.14	12	G1/4	19,7	6	24,5	32,2	16	5
302.02.12.38		G3/8	19,7	7	23	32,2	20	5
302.02.12.12		G1/2	19,7	8,5	24,5	32,2	24	5

### 302.10

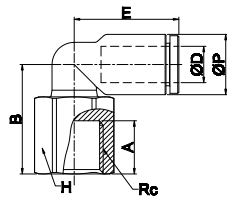
Curva 90° automatica cilindrica lunga  
Extra elbow male



CODICE-CODE	ØD	R	ØP	A	B	E	H	Bag Qty
302.10.04.M5	4	M5	9	4	27,1	17,1	9	10
302.10.04.18		G1/8	9	5	27,1	17,1	13	10
302.10.04.14		G1/4	9	6	27,8	17,1	16	10
302.10.06.M5	6	M5	11,2	4	28,2	18	9	10
302.10.06.18		G1/8	11,2	5	28,2	18	13	10
302.10.06.14		G1/4	11,2	6	28,9	18	16	10
302.10.08.18	8	G1/8	13,6	5	34,6	23,6	13	10
302.10.08.14		G1/4	13,6	6	32,8	23,6	16	10
302.10.08.38		G3/8	13,6	7	33,8	23,6	20	5
302.10.10.14	10	G1/4	16,3	6	43,8	25	16	5
302.10.10.38		G3/8	16,3	7	42,3	25	20	5
302.10.10.12		G1/2	16,3	8,5	43,8	25	24	5
302.10.12.14	12	G1/4	19,7	6	45,65	32,2	16	5
302.10.12.38		G3/8	19,7	7	44,15	32,2	20	5
302.10.12.12		G1/2	19,7	8,5	45,65	32,2	24	5

### 302.29

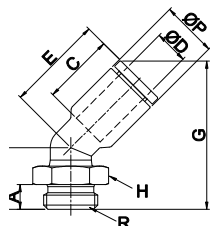
Curva 90° femmina automatica cilindrica  
Elbow female



CODICE-CODE	ØD	R	ØP	A	B	E	H	Bag Qty
302.29.04.18	4	G1/8	9	9	18,6	17,1	13	10
302.29.04.14		G1/4	9	12	21,6	17,1	16	10
302.29.06.18	6	G1/8	11,2	9	19,7	18	13	10
302.29.06.14		G1/4	11,2	12	22,7	18	16	10
302.29.08.18	8	G1/8	13,6	9	21,7	23,6	13	10
302.29.08.14		G1/4	13,6	12	24,7	23,6	16	10
302.29.08.38		G3/8	13,6	13	25,7	23,6	19	5
302.29.10.14	10	G1/4	16,3	12	26	25	16	5
302.29.10.38		G3/8	16,3	13	27	25	19	5
302.29.10.12		G1/2	16,3	16	30	25	24	5
302.29.12.14	12	G1/4	19,7	12	27,9	32,2	16	5
302.29.12.38		G3/8	19,7	13	28,9	32,2	19	5
302.29.12.12		G1/2	19,7	16	31,9	32,2	24	5

### 302.61

Curva 45° automatica cilindrica  
45° Elbow male

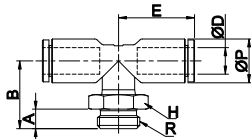


CODICE-CODE	ØD	R	ØP	A	B	C	E	H	G	Bag Qty
302.61.04.M5	4	M5	10,4	4	22	16	18,1	10	34,76	10
302.61.04.18		G1/8	10,4	5	23,6	16	18,1	10	38,76	10
302.61.04.14		G1/4	10,4	6	25,6	16	18,1	12	40,36	10
302.61.06.M5	6	M5	12,4	4	21,9	17	20,1	12	36,08	10
302.61.06.18		G1/8	11,2	5	13,7	15,5	18	13	30,1	10
302.61.06.14		G1/4	11,2	6	14,4	15,5	18	16	30,8	10
302.61.08.18	8	G1/8	13,6	5	16,8	17,8	23,6	13	37,91	10
302.61.08.14		G1/4	13,6	6	15	17,8	23,6	16	36,11	10
302.61.08.38		G3/8	13,6	7	16	17,8	23,6	20	37,11	10
302.61.10.14	10	G1/4	16,3	6	18,6	19,4	25	16	41,65	5
302.61.10.38		G3/8	16,3	7	17,1	19,4	25	20	40,15	5
302.61.10.12		G1/2	16,3	8,5	18,6	19,4	25	24	41,65	5
302.61.12.14	12	G1/4	19,7	6	20,1	22,4	32,2	16	49,41	5
302.61.12.38		G3/8	19,7	7	18,6	22,4	32,2	20	47,91	5
302.61.12.12		G1/2	19,7	8,5	20,1	22,4	32,2	24	49,41	5



**302.03**

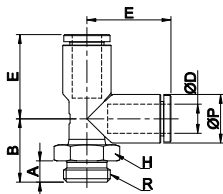
"T" centrale maschio automatico cilindrico  
"T" central male



CODICE-CODE	ØD	R	ØP	A	B	E	H	Bag Qty
302.03.04.M5	4	M5	9	4	16,6	17,1	9	10
302.03.04.18		G1/8	9	5	16,6	17,1	13	10
302.03.04.14		G1/4	9	6	17,3	17,1	16	10
302.03.06.M5	6	M5	11.2	4	17,7	18	9	10
302.03.06.18		G1/8	11.2	5	17,7	18	13	10
302.03.06.14		G1/4	11.2	6	18,4	18	16	10
302.03.08.18	8	G1/8	13.6	5	22,8	23,6	13	10
302.03.08.14		G1/4	13.6	6	21	23,6	16	10
302.03.08.38		G3/8	13.6	7	22	23,6	20	5
302.03.10.14	10	G1/4	16.3	6	24,8	25	16	5
302.03.10.38		G3/8	16.3	7	23,3	25	20	5
302.03.10.12		G1/2	16.3	8,5	24,8	25	24	5
302.03.12.14	12	G1/4	19.7	6	26,5	32,2	16	5
302.03.12.38		G3/8	19.7	7	25	32,2	20	5
302.03.12.12		G1/2	19.7	8,5	26,5	32,2	24	5

**302.07**

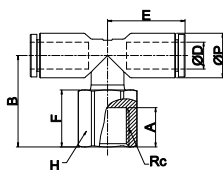
"T" laterale maschio automatico cilindrico  
"T" lateral male



CODICE-CODE	ØD	R	ØP	A	B	E	H	Bag Qty
302.07.04.M5	4	M5	9	4	14,6	17,1	9	10
302.07.04.18		G1/8	9	5	14,6	17,1	13	10
302.07.04.14		G1/4	9	6	15,3	17,1	16	10
302.07.06.M5	6	M5	11.2	4	15,7	19	9	10
302.07.06.18		G1/8	11.2	5	15,7	19	13	10
302.07.06.14		G1/4	11.2	6	16,4	19	16	10
302.07.08.18	8	G1/8	13.6	5	19,6	23,6	13	10
302.07.08.14		G1/4	13.6	6	17,8	23,6	16	10
302.07.08.38		G3/8	13.6	7	18,8	23,6	20	5
302.07.10.14	10	G1/4	16.3	6	22,6	25	16	5
302.07.10.38		G3/8	16.3	7	21,1	25	20	5
302.07.10.12		G1/2	16.3	8,5	22,6	25	24	5
302.07.12.14	12	G1/4	19.7	6	24,5	32,2	16	5
302.07.12.38		G3/8	19.7	7	23	32,2	20	5
302.07.12.12		G1/2	19.7	8,5	24,5	32,2	24	5

**302.35**

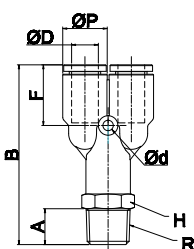
"T" centrale femmina automatico cilindrico  
"T" central female



CODICE-CODE	ØD	R	ØP	A	B	E	H	F	Bag Qty
302.35.04.M5	4	M5	9	5	16,6	17,1	9	9,8	10
302.35.04.18		G1/8	9	9	20,6	17,1	13	13,8	10
302.35.04.14		G1/4	9	12	23,6	17,1	17	16,8	10
302.35.06.M5	6	M5	11.2	5	17,7	18	9	9,8	10
302.35.06.18		G1/8	11.2	9	21,7	18	13	13,8	10
302.35.06.14		G1/4	11.2	12	24,7	18	17	16,8	10
302.35.08.18	8	G1/8	13.6	9	24,9	23,6	13	14,4	10
302.35.08.14		G1/4	13.6	12	27,9	23,6	17	17,4	10
302.35.08.38		G3/8	13.6	13	28,9	23,6	19	18,4	5
302.35.10.14	10	G1/4	16.3	12	28,2	25	17	16,9	5
302.35.10.38		G3/8	16.3	13	29,2	25	19	17,9	5
302.35.10.12		G1/2	16.3	16	32,2	25	24	20,9	5
302.35.12.14	12	G1/4	19.7	12	29,9	32,2	17	16,9	5
302.35.12.38		G3/8	19.7	13	30,9	32,2	19	17,9	5
302.35.12.12		G1/2	19.7	16	33,9	32,2	24	20,9	5

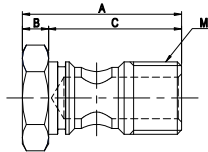
**302.09**

"Y" maschio automatico cilindrico  
"Y" male

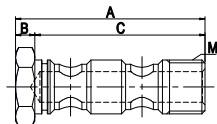


CODICE-CODE	ØD	R	ØP	A	B	Ød	F	H	Bag Qty
302.09.04.M5	4	M5	9	4	37,4	3,2	13,2	9	10
302.09.04.18		G1/8	9	5	37,4	3,2	13,2	13	10
302.09.04.14		G1/4	9	6	38,1	3,2	13,2	16	10
302.09.06.M5	6	M5	11.2	4	40,5	3,2	14,1	11	10
302.09.06.18		G1/8	11.2	5	40,5	3,2	14,1	13	10
302.09.06.14		G1/4	11.2	6	41,2	3,2	14,1	16	10
302.09.08.18	8	G1/8	13.6	5	48,9	3,2	18,6	13	10
302.09.08.14		G1/4	13.6	6	50,1	3,2	18,6	16	10
302.09.08.38		G3/8	13.6	7	51,1	3,2	18,6	20	5
302.09.10.14	10	G1/4	16.3	6	54,5	4,2	18	17	10
302.09.10.38		G3/8	16.3	7	53	4,2	18	20	10
302.09.10.12		G1/2	16.3	8,5	54,5	4,2	18	24	10
302.09.12.14	12	G1/4	19.7	6	64,4	4,2	23,9	19	10
302.09.12.38		G3/8	19.7	7	62,9	4,2	23,9	20	10
302.09.12.12		G1/2	19.7	8,5	64,4	4,2	23,9	24	10

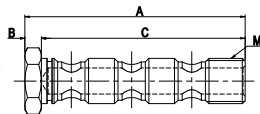


**302.53**Vite cava singola  
Single screw

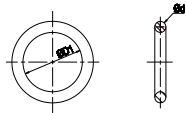
CODICE-CODE	M	A	B	C	H	Bag Qty
302.53.18	G1/8	26,5	4	22,5	14	10
302.53.14	G1/4	32	5	27	17	10
302.53.38	G3/8	36,5	6	30,5	21	10
302.53.12	G1/2	40,5	6	34,5	24	5

**302.54**Vite cava doppia  
Double screw

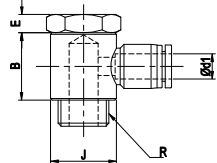
CODICE-CODE	M	A	B	C	H	Bag Qty
302.54.18	G1/8	43,5	4	39,5	14	10
302.54.14	G1/4	51	5	46	17	10
302.54.38	G3/8	58,5	6	52,5	21	5
302.54.12	G1/2	64,5	6	58,5	24	5

**302.55**Vite cava tripla (solo aria)  
Triple screw (only air)

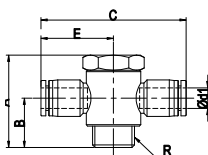
CODICE-CODE	M	A	B	C	H	Bag Qty
302.55.18	G1/8	60,5	4	56,5	14	10
302.55.14	G1/4	70	5	65	17	10
302.55.38	G3/8	80,5	6	74,5	21	5
302.55.12	G1/2	88,5	6	82,5	24	5

**302.56**O-ring di tenuta  
Ring sealing

CODICE-CODE	ØD1	Ød	Bag Qty
302.56.18	G1/8	1,5	10
302.56.14	G1/4	1,5	10
302.56.38	G3/8	1,5	10
302.56.12	G1/2	1,5	10

**302.51**Anello per vite cava  
Single banjo ring

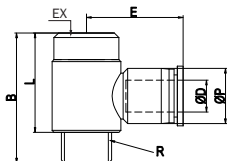
CODICE-CODE	ØD1	R	B	E	Bag Qty
302.51.04.18	4	G1/8	14	4	10
302.51.06.18	6	G1/8	14	4	10
302.51.06.14		G1/4	17,5	5	10
302.51.08.18	8	G1/8	14	4	10
302.51.08.14		G1/4	17,5	5	10
302.51.08.38		G3/8	19,5	6	5
302.51.10.14	10	G1/4	17,5	5	5
302.51.10.38		G3/8	19,5	6	5
302.51.12.38	12	G3/8	19,5	6	5
302.51.12.12		G1/2	22,5	6	5

**302.52**Anello doppio per vite cava  
"T" single banjo ring

CODICE-CODE	ØD1	R	A	B	C	Bag Qty
302.52.04.18	4	G1/8	26,5	14	46,8	10
302.52.06.18	6	G1/8	26,5	14	49,6	5
302.52.06.14		G1/4	32	17,5	51,8	5
302.52.08.18	8	G1/8	26,5	14	52,6	5
302.52.08.14		G1/4	32	17,5	52,6	5
302.52.08.38		G3/8	36,5	19,5	52,6	5
302.52.10.14	10	G1/4	32	17,5	59,6	5
302.52.10.38		G3/8	36,5	19,5	59,6	5
302.52.12.38	12	G3/8	36,5	19,5	66,6	4
302.52.12.12		G1/2	40,5	22,5	66,6	4

**302.42**

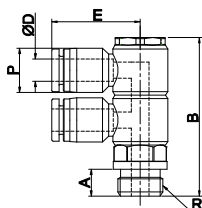
Banjo automatico maschio - chiave a brugola  
Hexagonal holed banjo male



CODICE-CODE	ØD	R	ØP	B	L	E	EX	Bag Qty
302.42.04.M5	4	M5	10,4	18	14,5	21	5	10
302.42.04.18		G1/8	10,4	28,5	23	23,3	6	10
302.42.06.M5	6	M5	12,4	18	14,5	24,9	5	10
302.42.06.18		G1/8	12,4	28,5	23	24,8	6	10
302.42.06.14		G1/4	12,4	34	26	25,9	8	10
302.42.08.18	8	G1/8	14,4	28,5	23	26,3	6	10
302.42.08.14		G1/4	14,4	34	26	26,3	8	10
302.42.08.38		G3/8	14,4	37,5	29	26,3	10	5
302.42.10.14	10	G1/4	17,6	34	26	29,8	8	5
302.42.10.38		G3/8	17,6	37,5	29	29,8	10	5
302.42.12.38	12	G3/8	21,2	37,5	29	33,3	10	5
302.42.12.12		G1/2	21,2	45,5	35	33,3	12	5

**302.43**

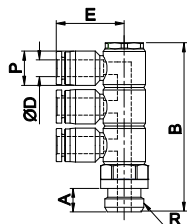
Doppio banjo automatico in linea cilindrico  
Double elbow



CODICE-CODE	ØD	R	ØP	A	B	E	H	Bag Qty
302.43.04.18	4	1/8	10,4	6	46,2	22,3	14	10
302.43.04.14		1/4	10,4	8	45,2	22,3	17	5
302.43.06.18	6	1/8	12,4	6	42,2	26,5	14	5
302.43.06.14		1/4	12,4	8	45,2	26,5	17	5
302.43.08.18	8	1/8	14,4	6	44,2	29,1	17	5
302.43.08.14		1/4	14,4	8	47,2	29,1	17	5
302.43.08.38		3/8	14,4	10	49,2	29,1	21	5
302.43.10.14	10	1/4	17,6	8	55,6	34,3	17	5
302.43.10.38		3/8	17,6	10	57,6	34,3	21	5
302.43.10.12		1/2	17,6	12	59,6	34,3	24	5
302.43.12.38	12	3/8	21,2	10	67,8	38,3	27	3
302.43.12.12		1/2	21,2	12	69,8	38,3	27	2

**302.44**

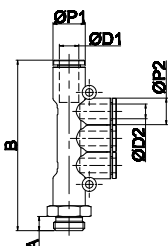
Triplo banjo linea cilindrico  
Triple elbow



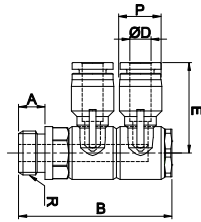
CODICE-CODE	ØD	R	ØP	A	B	E	H	Bag Qty
302.44.04.18	4	1/8	10,4	6	56,2	22,3	14	5
302.44.04.14		1/4	10,4	8	59,2	22,3	17	5
302.44.06.18	6	1/8	12,4	6	56,2	26,5	14	5
302.44.06.14		1/4	12,4	8	59,2	26,5	17	5
302.44.08.18	8	1/8	14,4	6	59,3	29,1	17	5
302.44.08.14		1/4	14,4	8	62,3	29,1	17	5
302.44.08.38		3/8	14,4	10	64,3	29,1	21	5
302.44.10.14	10	1/4	17,6	8	73,2	34,3	17	4
302.44.10.38		3/8	17,6	10	75,2	34,3	21	4
302.44.10.12		1/2	17,6	12	77,3	34,3	24	4
302.44.12.38	12	3/8	21,2	10	89,6	38,3	27	3
302.44.12.12		1/2	21,2	12	91	38,3	27	3

**302.13**

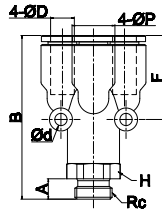
T multiplo ridotto cilindrico  
"T" multiple reduction



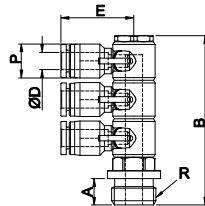
CODICE-CODE	ØD1	ØD2	R	ØP1	ØP2	B	A	H	Bag Qty
302.13.06.04.18	6	4	G1/8	11,2	9	60,6	5	13	5
302.13.06.04.14	6	4	G1/4	11,2	9	61,3	6	16	5
302.13.08.04.14	8	4	G1/4	13,6	9	65,3	6	16	5
302.13.08.06.14	8	6	G1/4	13,6	11,2	71,9	6	16	5
302.13.08.06.38	8	6	G3/8	13,6	11,2	72,9	7	20	5
302.13.10.08.38	10	8	G3/8	16,3	13,6	83,4	7	20	5

**302.45**Doppio twin cilindrico  
Double twin

CODICE-CODE	ØD	R	ØP	A	B	E	H	Bag Qty
302.45.04.18	4	1/8	10,4	6	42,2	22,3	14	5
302.45.04.14		1/4	10,4	8	45,2	22,3	17	5
302.45.06.18	6	1/8	12,4	6	42,2	26,5	14	5
302.45.06.14		1/4	12,4	8	45,2	26,5	17	5
302.45.08.18	8	1/8	14,4	6	44,2	29,1	17	5
302.45.08.14		1/4	14,4	8	47,2	29,1	17	5
302.45.08.38		3/8	14,4	10	49,2	29,1	21	5
302.45.10.14	10	1/4	17,6	8	55,6	34,3	17	4
302.45.10.38		3/8	17,6	10	57,6	34,3	21	4
302.45.10.12		1/2	17,6	12	59,1	34,3	24	4
302.45.12.38	12	3/8	21,2	10	67,8	38,3	27	3
302.45.12.12		1/2	21,2	12	69,3	38,3	27	3

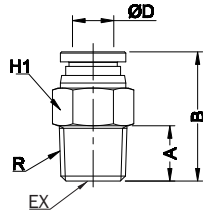
**302.38**Doppio Y maschio cilindrico  
"Y" double male

CODICE-CODE	ØD	Rc	A	H	ØP	B	F	Ød	Bag Qty
302.38.04.18	4	1/8	5	13	9	38,3	19,8	3,2	5
302.38.04.14	4	1/4	6	16	9	39	19,8	3,2	5
302.38.06.18	6	1/8	5	13	11.2	41,3	22	3,2	5
302.38.06.14	6	1/4	6	16	11.2	42,5	22	3,2	5

**302.46**Tripla twin cilindrico  
Triple twin

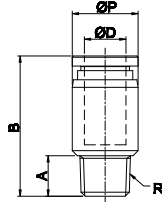
CODICE-CODE	ØD	R	ØP	A	B	E	H
302.46.04.18	4	1/8	10,4	6	56,2	22,3	14
302.46.04.14		1/4	10,4	8	59,2	22,3	17
302.46.06.18	6	1/8	12,4	6	56,2	26,5	14
302.46.06.14		1/4	12,4	8	59,2	26,5	17
302.46.08.18	8	1/8	14,4	6	59,3	29,1	17
302.46.08.14		1/4	14,4	8	62,3	29,1	17
302.46.08.38		3/8	14,4	10	64,3	29,1	21
302.46.10.14	10	1/4	17,6	8	73,2	34,3	17
302.46.10.38		3/8	17,6	10	75,2	34,3	21
302.46.10.12		1/2	17,6	12	77,3	34,3	21
302.46.12.38	12	3/8	21,2	10	89,3	38,3	27
302.46.12.12		1/2	21,2	12	91	38,3	27

## 301.01

Maschio diritto automatico conico  
Straight male

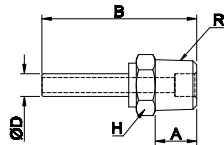
CODICE-CODE	ØD	R	A	B	H1	EX	Bag Qty
301.01.04.18	4	1/8	8	20,1	10	3	10
301.01.04.14		1/4	11	20,1	14	3	10
301.01.06.18	6	1/8	8	22	11	4	10
301.01.06.14		1/4	11	22,8	14	4	10
301.01.08.18	8	1/8	8	27,7	13	5	10
301.01.08.14		1/4	11	25,7	14	6	10
301.01.08.38		3/8	12	23,7	17	6	10
301.01.10.14	10	1/4	11	32,4	17	6	10
301.01.10.38		3/8	12	28,4	17	8	10
301.01.10.12		1/2	15	27,3	21	8	10
301.01.12.14	12	1/4	11	35,4	19	6	10
301.01.12.38		3/8	12	31,8	19	8	10
301.01.12.12		1/2	15	33,8	21	8	5

## 301.22

Maschio tondo diritto aut. Conico  
Straight round male

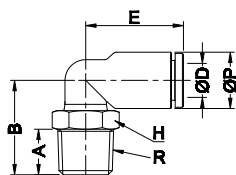
CODICE-CODE	ØD	R	ØP	A	B	H	Bag Qty
301.22.04.18	4	1/8	10	8	20,1	3	10
301.22.04.14		1/4	13,5	11	20,1	3	10
301.22.06.18	6	1/8	11	8	22	4	10
301.22.06.14		1/4	13,5	11	22,8	4	10
301.22.08.18	8	1/8	13	8	27,7	5	10
301.22.08.14		1/4	13,5	11	25,7	6	10
301.22.08.38		3/8	17	12	23,7	6	10
301.22.10.14	10	1/4	15,5	11	32,4	6	10
301.22.10.38		3/8	17	12	28,4	8	10
301.22.10.12		1/2	21	15	27,3	8	10
301.22.12.14	12	1/4	18,8	11	35,4	6	10
301.22.12.38		3/8	18,8	12	31,8	8	10
301.22.12.12		1/2	21	15	33,8	8	5

## 301.47

Codolo maschio conico  
Plug-in male

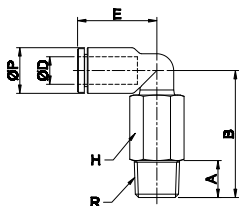
CODICE-CODE	ØD	R	A	B	H	Bag Qty
301.47.04.18	4	1/8	8	33	10	10
301.47.04.14		1/4	11	36	14	10
301.47.06.18	6	1/8	8	68	10	10
301.47.06.14		1/4	11	41	14	10
301.47.08.18	8	1/8	8	48	12	10
301.47.08.14		1/4	11	43	14	10
301.47.08.38		3/8	12	44	17	10
301.47.10.14	10	1/4	11	55	17	5
301.47.10.38		3/8	12	49	17	5
301.47.10.12		1/2	15	52	21	5
301.47.12.14	12	1/4	11	62	19	5
301.47.12.38		3/8	12	60,9	19	5
301.47.12.12		1/2	15	57	21	5

## 301.02

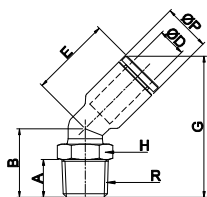
Curva 90° automatico conica  
Elbow male

CODICE-CODE	ØD	R	ØP	A	B	E	H	Bag Qty
301.02.04.18	4	1/8	9	8	17,8	17,1	10	10
301.02.04.14		1/4	9	11	20,8	17,1	14	10
301.02.06.18	6	1/8	11,2	8	18,9	18	10	10
301.02.06.14		1/4	11,2	11	21,9	18	14	10
301.02.08.18	8	1/8	13,6	8	20,3	23,6	10	10
301.02.08.14		1/4	13,6	11	22,8	23,6	14	10
301.02.08.38		3/8	13,6	12	23,8	23,6	17	10
301.02.10.14	10	1/4	16,3	11	26,6	25	17	5
301.02.10.38		3/8	16,3	12	26,1	25	17	5
301.02.10.12		1/2	16,3	15	29,1	25	21	5
301.02.12.14	12	1/4	19,7	11	28,5	32,2	17	5
301.02.12.38		3/8	19,7	12	28	32,2	17	5
301.02.12.12		1/2	19,7	15	31	32,2	21	5

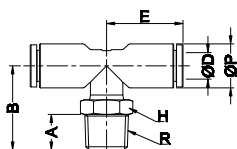


**301.10**Curve 90° automatica conica  
Extra elbow male

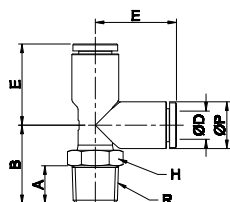
CODICE-CODE	ØD	R	ØP	A	B	E	H	Bag Qty
301.10.04.18	4	1/8	9	8	30,3	17,1	10	10
301.10.04.14		1/4	9	11	33,3	17,1	14	10
301.10.06.18	6	1/8	11,2	8	31,4	18	10	10
301.10.06.14		1/4	11,2	11	34,4	18	14	10
301.10.08.18	8	1/8	13,6	8	35,3	23,6	10	10
301.10.08.14		1/4	13,6	11	37,8	23,6	14	10
301.10.08.38		3/8	13,6	12	38,8	23,6	17	5
301.10.10.14	10	1/4	16,3	11	47,8	25	17	5
301.10.10.38		3/8	16,3	12	47,3	25	17	5
301.10.10.12		1/2	16,3	15	50,3	25	21	5
301.10.12.14	12	1/4	19,7	11	49,65	32,2	17	5
301.10.12.38		3/8	19,7	12	49,15	32,2	17	5
301.10.12.12		1/2	19,7	15	52,15	32,2	21	5

**301.61**Curva 45° automatica conica  
45° Elbow male

CODICE-CODE	ØD	R	ØP	A	B	E	H	G	Bag Qty
301.61.04.18	4	1/8	11,2	8	16,9	18	10	33,3	10
301.61.04.14		1/4	11,2	11	19,9	18	14	36,6	10
301.61.06.18	6	1/8	11,2	8	16,9	18	10	33,3	10
301.61.06.14		1/4	11,2	11	19,9	18	14	36,3	10
301.61.08.18	8	1/8	13,6	8	17,5	23,6	10	38,61	10
301.61.08.14		1/4	13,6	11	20	23,6	14	41,11	10
301.61.08.38		3/8	13,6	12	21	23,6	17	42,11	10
301.61.10.14	10	1/4	16,3	11	22,6	25	17	45,65	5
301.61.10.38		3/8	16,3	12	22,1	25	17	45,15	5
301.61.10.12		1/2	16,3	15	25,1	25	21	48,153	5
301.61.12.14	12	1/4	19,7	11	24,1	32,2	17	53,41	5
301.61.12.38		3/8	19,7	12	23,6	32,2	17	52,91	5
301.61.12.12		1/2	19,7	15	26,6	32,2	21	55,91	5

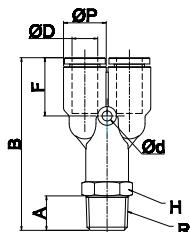
**301.03**Centrale maschio automatico conico  
"T" central male

CODICE-CODE	ØD	R	ØP	A	B	E	H	Bag Qty
301.03.04.18	4	1/8	9	8	19,8	17,1	10	10
301.03.04.14		1/4	9	11	22,8	17,1	14	10
301.03.06.18	6	1/8	11,2	8	20,9	18	10	10
301.03.06.14		1/4	11,2	11	23,9	18	14	10
301.03.08.18	8	1/8	13,6	8	23,5	23,6	10	10
301.03.08.14		1/4	13,6	11	26	23,6	14	10
301.03.08.38		3/8	13,6	12	27	23,6	17	5
301.03.10.14	10	1/4	16,3	11	28,8	25	17	5
301.03.10.38		3/8	16,3	12	28,3	25	17	5
301.03.10.12		1/2	16,3	15	31,3	25	21	5
301.03.12.14	12	1/4	19,7	11	30,5	32,2	17	5
301.03.12.38		3/8	19,7	12	30	32,2	17	5
301.03.12.12		1/2	19,7	15	33	32,2	21	5

**301.07**Laterale maschio automatico conico  
"T" lateral male

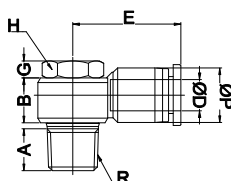
CODICE-CODE	ØD	R	ØP	A	B	E	H	Bag Qty
301.07.04.18	4	1/8	9	8	17,8	17,1	10	10
301.07.04.14		1/4	9	11	20,8	17,1	14	10
301.07.06.18	6	1/8	11,2	8	18,9	19	10	10
301.07.06.14		1/4	11,2	11	21,9	19	14	10
301.07.08.18	8	1/8	13,6	8	20,3	23,6	10	10
301.07.08.14		1/4	13,6	11	22,8	23,6	14	10
301.07.08.38		3/8	13,6	12	23,8	23,6	17	5
301.07.10.14	10	1/4	16,3	11	26,6	25	17	5
301.07.10.38		3/8	16,3	12	26,1	25	17	5
301.07.10.12		1/2	16,3	15	29,1	25	21	5
301.07.12.14	12	1/4	19,7	11	28,5	32,2	17	5
301.07.12.38		3/8	19,7	12	28	32,2	17	5
301.07.12.12		1/2	19,7	15	31	32,2	21	5

## 301.09

Maschio automatico conico  
"Y" male

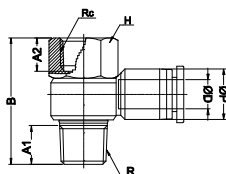
CODICE-CODE	ØD	R	ØP	A	B	Ød	F	H	Bag Qty
301.09.04.18	4	1/8	9	8	40,6	3,2	13,2	10	10
301.09.04.14		1/4	9	11	43,6	3,2	13,2	14	10
301.09.06.18	6	1/8	11,2	8	43,7	3,2	14,1	11	10
301.09.06.14		1/4	11,2	11	46,7	3,2	14,1	14	10
301.09.08.18	8	1/8	13,6	8	52,6	3,2	18,6	13	10
301.09.08.14		1/4	13,6	11	55,1	3,2	18,6	14	10
301.09.08.38		3/8	13,6	12	56,1	3,2	18,6	17	5
301.09.10.14	10	1/4	16,3	11	56	4,2	18	17	5
301.09.10.38		3/8	16,3	12	58	4,2	18	17	5
301.09.10.12		1/2	16,3	15	61	4,2	18	21	5
301.09.12.14	12	1/4	19,7	11	65,9	4,2	23,9	19	5
301.09.12.38		3/8	19,7	12	67,9	4,2	23,9	19	5
301.09.12.12		1/2	19,7	15	70,9	4,2	23,9	21	5

## 301.25

Banjo automatico maschio conico  
Banjo male

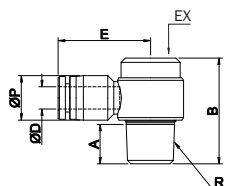
CODICE-CODE	ØD	R	ØP	A	B	E	H	G	Bag Qty
301.25.04.18	4	1/8	10,4	8	12	22,4	10	4	10
301.25.04.14		1/4	10,4	11	11,8	24,4	10	4,5	10
301.25.06.18	6	1/8	12,4	8	12	23,6	10	4	10
301.25.06.14		1/4	12,4	11	11,8	25,7	14	4,5	10
301.25.08.18	8	1/8	14,4	8	12	25	10	4	10
301.25.08.14		1/4	14,4	11	11,8	28,2	14	4,5	10
301.25.08.38		3/8	14,4	12	15,5	28,6	19	5	5
301.25.10.14	10	1/4	17,6	11	11,8	31,2	14	4,5	5
301.25.10.38		3/8	17,6	12	15,5	31,6	19	5	5
301.25.10.12		1/2	17,6	15	17,7	34,5	24	5	5
301.25.12.14	12	1/4	21	11	11,8	34,8	14	4,5	5
301.25.12.38		3/8	21	12	15,5	36	19	5	5
301.25.12.12		1/2	21	15	17,7	36	24	5	5

## 301.26

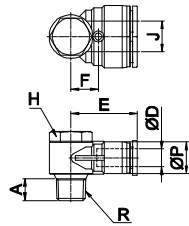
Banjo automatico femmina conico  
Banjo female

CODICE-CODE	ØD	R	Rc	ØP	A1	A2	B	H	Bag Qty
301.26.04.18	4	1/8	1/8	10,4	8	9	30,5	14	10
301.26.06.18	6	1/8	1/8	12,4	8	9	30,5	14	10
301.26.06.14		1/4	1/4	12,4	11	12	36	17	10
301.26.08.18	8	1/8	1/8	14,4	8	9	30,5	14	10
301.26.08.14		1/4	1/4	14,4	11	12	36	17	10
301.26.08.38		3/8	3/8	14,4	12	13	41,8	21	5
301.26.10.14	10	1/4	1/4	17,6	11	12	36	17	5
301.26.10.38		3/8	3/8	17,6	12	13	41,8	21	5
301.26.10.12		1/2	1/2	17,6	15	16	51	24	5
301.26.12.14	12	1/4	1/4	21	11	12	36	16	5
301.26.12.38		3/8	3/8	21	12	12	41,8	21	5
301.26.12.12		1/2	1/2	21	15	15	51	24	5

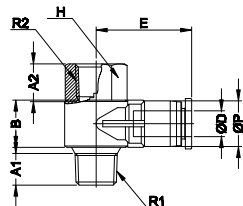
## 301.42

Banjo aut. Maschio - chiave a brugola  
Hexagonal holed banjo male

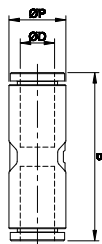
CODICE-CODE	ØD	R	ØP	A	B	E	EX	Bag Qty
301.42.04.18	4	1/8	10,4	8	26,9	21,5	6	10
301.42.06.18	6	1/8	12,4	8	26,9	25,7	6	10
301.42.06.14		1/4	12,4	11	29,5	25,7	8	10
301.42.08.18	8	1/8	14,4	8	26,9	25,1	6	10
301.42.08.14		1/4	14,4	11	29,5	28,3	8	10
301.42.08.38		3/8	14,4	12	33,8	28,7	10	5
301.42.10.14	10	1/4	17,6	11	29,5	31,7	8	5
301.42.10.38		3/8	17,6	12	33,8	32,1	10	5
301.42.10.12		1/2	17,6	15	45	35	12	5
301.42.12.38	12	3/8	21	12	33,8	36	10	5
301.42.12.12		1/2	21	15	45	36	12	5

**301.27**Doppio banjo maschio conico  
Dual banjo male

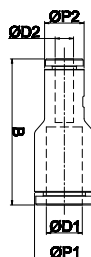
CODICE-CODE	ØD	R	ØP	A	E	H	F	J	Bag Qty
302.27.04.M5	4	M5 cil.	10,4	5,5	20,9	8	0	10	10
301.27.06.18	6	1/8	12,4	8	26,7	14	11	12	5
301.27.08.14	8	1/4	14,4	11	30,2	17	12	14	5
301.27.10.38	10	3/8	17,6	12	34,3	22	15	17	5
301.27.12.12	12	1/2	21	15	38,3	24	17	21	5

**301.28**Doppio banjo femmina conica  
Dual banjo female

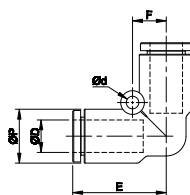
CODICE-CODE	ØD	R1	R2	ØP	A1	A2	B	C	E	H	Bag Qty
302.28.04.M5	4	M5 cil.	M5	10,4	5,5	5,5	8,9	16	20,9	8	10
301.28.06.18	6	1/8	1/8	12,4	8	9	14	17	26,7	14	10
301.28.08.14	8	1/4	1/4	14,4	11	12	15	18,5	30,2	17	5
301.28.10.38	10	3/8	3/8	17,6	12	13	18	21	34,3	22	5
301.28.12.12	12	1/2	1/2	21	15	16	21	22,5	38,8	24	5

**301.04**Intermedio automatico  
Straight union

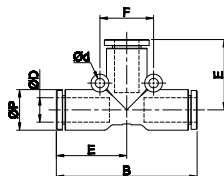
CODICE-CODE	ØD	ØP	B	Bag Qty
301.04.04.04	4	9	30,2	10
301.04.06.06	6	11,2	32	10
301.04.08.08	8	13,6	40,2	10
301.04.10.10	10	16,3	40	10
301.04.12.12	12	19,7	54,8	5

**301.30**Intermedio automatico diritto ridotto  
Reducer straight union

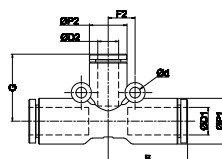
CODICE-CODE	ØD1	ØD2	ØP1	ØP2	B	Bag Qty
301.30.06.04	6	4	11,2	9	31,5	10
301.30.08.04	8	4	13,6	9	33,3	10
301.30.08.06	8	6	13,6	11,2	34,3	10
301.30.10.06	10	6	16,3	11,2	35,9	10
301.30.10.08	10	8	16,3	13,6	38,2	10
301.30.12.08	12	8	19,7	13,6	41,2	5
301.30.12.10	12	10	19,7	16,3	42,8	5

**301.05**Curva 90° intermedia automatica  
Elbow union

CODICE-CODE	ØD	ØP	B	F	Ød	Bag Qty
301.05.04.04	4	9	17,1	6	3,2	10
301.05.06.06	6	11,2	19	6,7	3,2	10
301.05.08.08	8	13,6	23,6	8,5	3,2	10
301.05.10.10	10	16,3	25	10	4,2	5
301.05.12.12	12	19,7	32,2	12	4,2	5

**301.06**T intermedio automatico  
"T" union

CODICE-CODE	ØD	ØP	B	E	F	Ød	Bag Qty
301.06.04.04	4	9	34,2	17,1	12	3,2	10
301.06.06.06	6	11,2	38	19	13	3,2	10
301.06.08.08	8	13,6	47,2	23,6	18	3,2	10
301.06.10.10	10	16,3	50	25	24	4,2	5
301.06.12.12	12	19,7	64,4	32,2	28	4,2	5

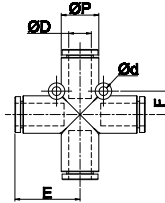
**301.57**T intermedio automatico ridotto  
"T" reducer union

CODICE-CODE	ØD1	ØD2	ØP1	ØP2	E	F2	G	Ød	Bag Qty
301.57.06.04	6	4	11,2	9	19	6	18,1	3,2	10
301.57.08.06	8	6	13,6	11,2	23,6	8	20	3,2	10
301.57.10.08	10	8	16,3	13,6	25	9,5	24,1	4,2	5
301.57.12.10	12	10	19,7	16,3	32,2	10	25,5	4,2	5



### 301.21

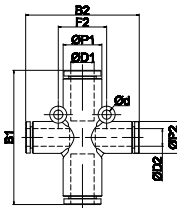
Croce intermedia automatica  
Cross union



CODICE-CODE	ØD	ØP	E	F	Ød	Bag Qty
301.21.04	4	9	17,1	6	3,2	10
301.21.06	6	11.2	19	6,5	3,2	10
301.21.08	8	13.6	23,6	8,5	3,2	5
301.21.10	10	16.3	25	10	4,2	5
301.21.12	12	19.7	32,2	12	4,2	5

### 301.58

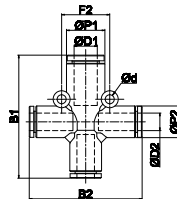
Croce intermedia ridotta 2/2  
2/2 Cross union



CODICE-CODE	ØD1	ØD2	ØP1	ØP2	B1	B2	F2	Ød	Bag Qty
301.58.08.06	8	6	13.6	11.2	47,2	39,9	17	3,2	5
301.58.10.08	10	8	16.3	13.6	50	48,2	20	4,2	5
301.58.12.10	12	10	19.7	16.3	64,4	51	24	4,2	5

### 301.59

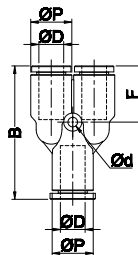
Croce intermedia ridotta 3/1  
3/1 Cross union



CODICE-CODE	ØD1	ØD2	ØP1	ØP2	B1	B2	F2	Ød	Bag Qty
301.59.08.06	8	6	13.6	11.2	43,6	39,9	17	3,2	5
301.59.10.08	10	8	16.3	13.6	49,1	48,2	20	4,2	5
301.59.12.10	12	10	19.7	16.3	57,7	51	24	4,2	5

### 301.08

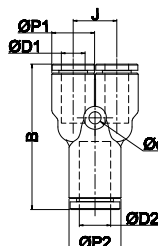
Y intermedio automatico  
"Y" union



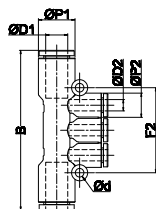
CODICE-CODE	ØD	ØP	B	F	Ød	Bag Qty
301.08.04.04	4	9	31,2	13,2	3,2	10
301.08.06.06	6	11.2	34,7	14,1	3,2	10
301.08.08.08	8	13.6	44,2	18,6	3,2	10
301.08.10.10	10	16.3	46	18	4,2	5
301.08.12.12	12	19.7	56,8	23,9	4,2	5

### 301.11

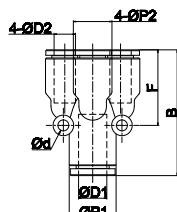
Y intermedio automatico ridotto  
"Y" reducer



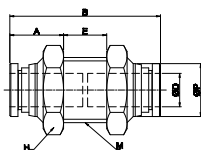
CODICE-CODE	ØD1	ØD2	ØP1	ØP2	B	Ød	F	J	Bag Qty
301.11.06.04	4	6	9	11,2	32,5	3,2	13,2	9,3	10
301.11.08.04		8	11,2	13,6	38,5	3,2	14,1	11,4	10
301.11.08.06	6	8	11,2	13,6	38,5	3,2	14,1	11,4	10
301.11.10.08	8	10	13,6	16,3	43,2	3,2	17,8	14,2	5
301.11.12.10	10	12	16,3	19,7	50,9	4,2	18	17	5

**301.12**T multiplo automatico ridotto  
"T" multiple reducer

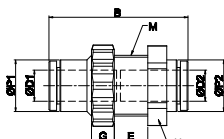
CODICE-CODE	ØD1	ØD2	ØP1	ØP2	B	Ød	F2	Bag Qty
301.12.06.04	6	4	11,2	9	54,7	3,2	30,6	5
301.12.08.04	8	4	13,6	9	59,4	3,2	31,6	5
301.12.08.06	8	6	13,6	11,2	66	3,2	38,8	5
301.12.10.06	10	6	16,3	11,2	68,8	4,2	38,8	5
301.12.10.08	10	8	16,3	13,6	76,4	4,2	47,4	5

**301.39**Doppio y intermedio ridotto  
"Y" reducer double union

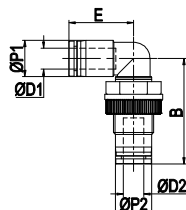
CODICE-CODE	ØD1	ØD2	ØP1	ØP2	B	F	Ød	Bag Qty
301.39.06.04	6	4	11,2	9	32,5	19,8	3,2	5
301.39.08.06	8	6	13,6	11,2	36,6	22	3,2	5

**301.19**Passaprete intermedio automatico metallo  
Bulkhead union

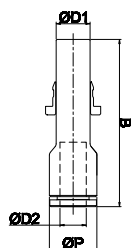
CODICE-CODE	ØD	ØP	M	A	H	B	E	Bag Qty
301.19.04	4	8.8	M12X1.0	10.7	14	30	8,6	10
301.19.06	6	11	M14X1.0	11.3	17	31,9	9,4	10
301.19.08	8	13	M16X1.0	13.2	19	37	10,6	10
301.19.10	10	15.5	M20X1.0	13.6	24	40,1	12,9	5
301.19.12	12	18.8	M22X1.0	15.3	26	45,8	15,4	5

**301.48**Passaprete intermedio automatico polimero  
"P" bulkhead union

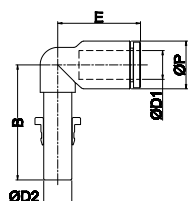
CODICE-CODE	ØD1	ØD2	ØP1	ØP2	M	G	H	B	E	Bag Qty
301.48.04	4	4	9	9	M12X1.5	5	14	30	7,1	10
301.48.06	6	6	11,2	11,2	M14X1.5	5	17	31,9	8,6	10
301.48.08	8	8	13,6	13,6	M16X1.5	6	19	36,6	8,8	10
301.48.10	10	10	16,3	16,3	M20X2.0	6	24	40	10,2	5
301.48.12	12	12	19,7	19,7	M24X2.0	6	27	46	11,9	5

**301.60**Curva 90° passaprete automatica  
"P" elbow bulkhead union

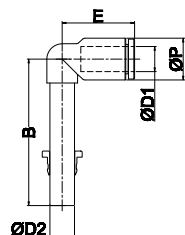
CODICE-CODE	ØD1	ØD2	ØP1	ØP2	M	E	B	H	Bag Qty
301.60.04	4	4	10,4	10,4	M12X1.5	19,8	33,6	14	10
301.60.06	6	6	12,4	12,4	M14X1.5	17,2	37,9	17	10
301.60.08	8	8	17,4	17,4	M16X1.5	25,7	41,9	19	5
301.60.10	10	10	17,6	17,6	M20X2.0	30,3	47,6	24	5
301.60.12	12	12	21,2	21,2	M24X2.0	32,7	53,8	27	5

**301.18**Codolo diritto automatico  
Plug-in straight reducer

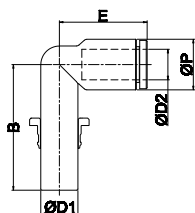
CODICE-CODE	ØD1	ØD2	ØP	B	Bag Qty
301.18.06.04	6	4	9	36,1	10
301.18.08.04	8	4	9	36,9	10
301.18.08.06		6	11,2	39,5	10
301.18.10.06	10	6	11,2	40,3	10
301.18.10.08		8	13,6	45,6	10
301.18.12.06	12	6	11,2	45	5
301.18.12.08		8	13,6	46,6	5
301.18.12.10		10	16,3	46,6	5

**301.14**Codolo a 90° automatico  
Plug-in elbow

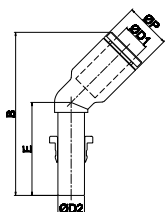
CODICE-CODE	ØD1	ØD2	ØP	B	E	Bag Qty
301.14.04	4	4	9	23,5	17,1	10
301.14.06	6	6	11,2	29,6	18	10
301.14.08	8	8	13,6	32,8	23,6	10
301.14.10	10	10	16,3	36,2	25	5
301.14.12	12	12	19,7	39,9	32,2	5

**301.41**Codolo a 90° lungo automatico  
Plug-in extended elbow

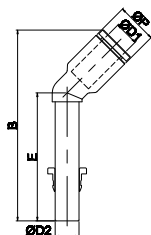
CODICE-CODE	ØD1	ØD2	ØP	B	E	Bag Qty
301.41.04	4	4	9	33,5	17,1	10
301.41.06	6	6	11,2	42,1	18	10
301.41.08	8	8	13,6	47,8	23,6	10
301.41.10	10	10	16,3	53,7	25	5
301.41.12	12	12	19,7	60,9	32,2	5

**301.40**Codolo a 90° ridotto automatico  
Plug-in reduction elbow

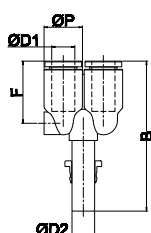
CODICE-CODE	ØD1	ØD2	ØP	B	E	Bag Qty
301.40.06.04	6	4	9	28,5	17,1	10
301.40.08.06	8	6	11,2	30,6	18	10
301.40.10.08	10	8	13,6	33,8	23,6	10
301.40.12.10	12	10	16,3	38,2	25	5

**301.64**Codolo a 45° lungo automatico  
45° Plug-in elbow

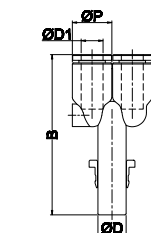
CODICE-CODE	ØD1	ØD2	ØP	B	E	Bag Qty
301.64.04	4	4	10,4	45,36	32,6	10
301.64.06	6	6	12,8	51,18	37	10
301.64.08	8	8	14,4	58,03	42	10
301.64.10	10	10	17,6	66,35	48	5
301.64.12	12	12	21	74,57	53,9	5

**301.65**Codolo a 45° lungo automatico  
45° Plug-in extended elbow

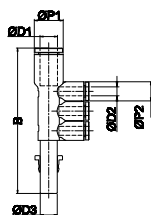
CODICE-CODE	ØD1	ØD2	ØP	B	E	Bag Qty
301.65.04	4	4	10,4	56,36	43,6	10
301.65.06	6	6	12,8	61,68	47,5	10
301.65.08	8	8	14,4	70,53	54,5	10
301.65.10	10	10	17,6	80,35	62	5
301.65.12	12	12	21	90,57	69,9	5

**301.15**Codolo a Y automatico  
"Y" plug-in

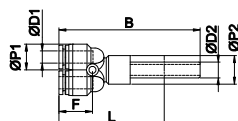
CODICE-CODE	ØD1	ØD2	ØP	B	F	Bag Qty
301.15.04	4	4	9	37,8	16	10
301.15.06	6	6	11,2	45	17,2	10
301.15.08	8	8	13,6	53,1	22	10
301.15.10	10	10	16,3	56	22,6	5
301.15.12	12	12	19,7	63,4	27,2	5

**301.16**Codolo a Y ridotto automatico  
"Y" plug-in reducer

CODICE-CODE	ØD1	ØD2	ØP	B	Bag Qty
301.16.06.04	6	4	9	42,8	10
301.16.08.06	8	6	11,2	45,5	10
301.16.10.08	10	8	13,6	53,1	10
301.16.12.10	12	10	16,3	58	5

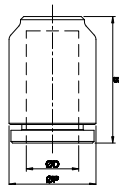
**301.17**Codolo a T multiplo automatico  
Multiple "T" plug-in reduction

CODICE-CODE	ØD1	ØD2	ØD3	ØP1	ØP2	B	Bag Qty
301.17.06.04	6	4	6	11,2	9	64,2	5
301.17.08.04	8	4	8	13,6	9	68,5	5
301.17.08.08	8	6	8	13,6	11,2	75	5
301.17.10.08	10	8	10	16,3	13,6	86,2	5

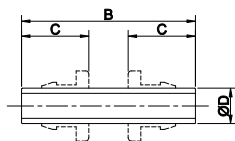
**301.37**Doppio Y automatico con codolo  
Double "T" reducer

CODICE-CODE	ØD1	ØD2	ØP1	ØP2	B	L	F	Ød	Bag Qty
301.37.06.04	4	6	10,4	13	55,2	43,6	14,2	3,2	5
301.37.08.06	6	8	13	14,4	60,9	48	16,9	3,5	5

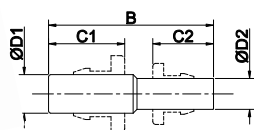


**301.24**Tappo automatico  
Cap

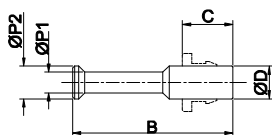
CODICE-CODE	ØD	ØP	B	Bag Qty
301.24.04	4	9	15,6	10
301.24.06	6	11,2	17	10
301.24.08	8	13,6	19,8	10
301.24.10	10	16,3	21	10
301.24.12	12	19,7	25,4	10

**301.32**Giunzione tubo-tubo  
Splicer tube

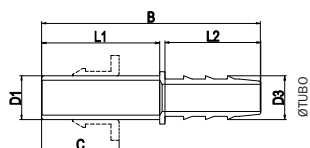
CODICE-CODE	ØD	B	C	Bag Qty
301.32.04	4	35	16	10
301.32.06	6	37	17	10
301.32.08	8	39,5	18,5	10
301.32.10	10	46	21	10
301.32.12	12	50	22,5	5

**301.31**Giunzione ridotta tubo-tubo  
Splicer tube reducer

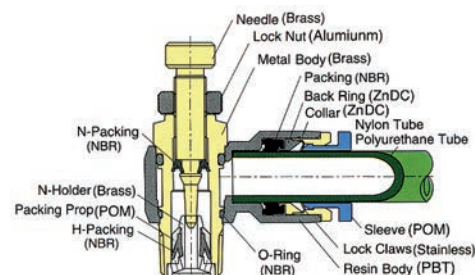
CODICE-CODE	ØD1	ØD2	B	C1	C2	Bag Qty
301.31.06.04	6	4	36	17	16	10
301.31.08.04	8	4	38	18,9	18	10
301.31.08.06	8	6	39	18,5	17	10
301.31.10.06	10	6	42	21,9	19	10
301.31.10.08	10	8	43	21	18,5	10
301.31.12.08	12	8	45	23,9	20	10
301.31.12.10	12	10	48	22,5	21	10

**301.33**Tappo per raccordo automatico  
Plug

CODICE-CODE	ØD	B	ØP1	ØP2	C	Bag Qty
301.33.04	4	28	3	4	16	10
301.33.06	6	32	4	6	17	10
301.33.08	8	39	5	8	18,5	10
301.33.10	10	42	8	10	21	10
301.33.12	12	44	8	12	22,5	10

**301.63**Codolo portagomma  
Extended plug-in

CODICE-CODE	ØD1	Øtubo	ØD3	B	C	L1	L2	Bag Qty
301.63.04.04	4	4	5,9	36	16	18	17	10
301.63.06.06	6	6	7,9	41	17	23	17	10
301.63.08.06	8	6	7,9	43	18,5	25	17	10
301.63.08.08	8	8	10	48,2	18,5	25	22	10
301.63.10.08	10	8	10	50,2	21	27	22	10
301.63.12.08	12	8	10	54,2	22,5	31	22	10
301.63.12.10	12	10	12	54,7	22,5	31	22,5	10



### Dati tecnici - Technical data

Applicazioni - Applications	aria compressa/vuoto - compressed air/vacuum
Fluido - Fluid	aria (no altri fluidi) - air (no other gases or liquids)
Pressione di lavoro - Working pressure	0 - 10 bar
Depressione - Vacuum	0,5 kgf /cm <sup>2</sup>
Range di temperatura - Temperature range	-10 ÷ 60 °C
Tubi consigliati - Recommended hoses	Nylon, Poliuretano - Nylon, Polyurethane

### Guida alle referenze Guide to references

321 . 01 . 06 . 18

#### Serie Line

321 = Regolatore di flusso conico - in linea  
Conical in line speed controller

322 = Regolatore di flusso cilindrico  
Cylinder speed controller

#### Modello Type

Consultare le tabelle alle pagine che seguono  
Please check it in following pages

Filetto  
Thread Size  
18 = 1/8  
14 = 1/4  
38 = 3/8  
12 = 1/2  
M5 = M5

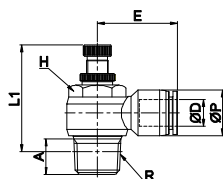
#### ∅ Tubo Tube diameter

04 = tubo 4 mm  
4mm tube  
06 = tubo 6 mm  
6mm tube  
08 = tubo 8 mm  
8mm tube  
10 = tubo 10 mm  
10mm tube  
12 = tubo 12 mm  
12mm tube

Modello/Model	Speed con.	
Per cilindro (out) For cylinder (out)		
Per valvola (in) For Valve (in)		
Unidirezionale in linea U/directional in line		
Bidirezionale in linea Bidirectional in line		

**321.01**

Regolatore di flusso 90° conico (con anello rosso)

**versione per cilindro**Conical elbow speed controller (with red sleeve)  
for cylinder version**321.02**

Regolatore di flusso 90° conico (con anello nero)

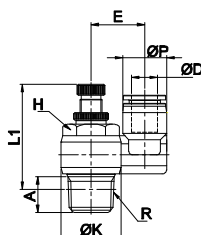
**versione per valvola**Conical elbow speed controller (with black sleeve)  
for valve version

CODICE-CODE	ØD	R	ØP	A	L1 (max)	E	H	Bag Qty
321.01.04.18	4	G1/8	10	7	36,3	20,2	10	10
321.01.04.14		G1/4	10	10	43,7	23,2	14	10
321.01.06.18	6	G1/8	12,4	7	36,6	22,1	14	10
321.01.06.14		G1/4	12,4	10	43,7	24,2	14	10
321.01.08.18	8	G1/8	14,4	7	36,6	23,7	14	10
321.01.08.14		G1/4	14,4	10	43,7	26,9	14	10
321.01.08.38		G3/8	14,4	12,5	48,3	27,3	19	5
321.01.10.14	10	G1/4	17,6	10	43,7	29,1	14	5
321.01.10.38		G3/8	17,6	12,5	48,3	29,5	19	5
321.01.10.12		G1/2	17,6	15,5	47,8	32,4	24	5
321.01.12.38	12	G3/8	21	12,5	48,3	34,7	19	5
321.01.12.12		G1/2	21	15,5	47,8	34,7	24	5

CODICE-CODE	ØD	R	ØP	A	L1 (max)	E	H	Bag Qty
321.02.04.18	4	G1/8	10	7	36,3	20,2	10	10
321.02.06.18	6	G1/8	12,4	7	36,6	22,1	10	10
321.02.08.18	8	G1/8	14,4	7	36,6	23,7	14	10
321.02.08.14		G1/4	14,4	10	43,7	26,9	14	10
321.02.10.38	10	G3/8	17,6	12,5	48,3	29,5	19	5
321.02.12.12	12	G1/2	21	15,5	47,8	34,7	24	5

**321.03**

Regolatore di flusso diritto conico (con anello rosso)

**versione per cilindro**Conical straight speed controller (with red sleeve)  
for cylinder version**321.04**

Regolatore di flusso diritto conico (con anello nero)

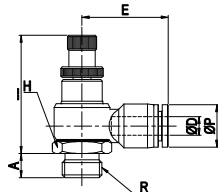
**versione per valvola**Conical straight speed controller (with black sleeve)  
for valve version

CODICE-CODE	ØD	R	ØP	A	L1 (max)	E	H	Bag Qty
322.03.04.M5	4	M5 cil.	10,4	3,5	26,5	15,9	8	10
321.03.04.18		G1/8	10,4	8	36	18,1	10	10
322.03.06.M5	6	M5 cil.	12,4	3,5	26,5	15,9	8	10
321.03.06.18		G1/8	12,4	8	36	18,1	10	10
321.03.06.14	8	G1/4	12,4	11,2	41,5	20,1	14	10
321.03.08.18		G1/8	14,4	8	36	18,1	10	5
321.03.08.14		G1/4	14,4	11,2	41,5	20,1	14	5
321.03.08.38	10	G3/8	14,4	13,3	47	22,5	19	5
321.03.10.14		G1/4	17,6	11,2	41,5	20,1	14	5
321.03.10.38		G3/8	17,6	13,3	47	22,5	19	5
321.03.10.12	12	G1/2	17,6	16,5	52	24,9	24	5
321.03.12.12		G1/2	21,2	16,5	52	24,9	24	5

CODICE-CODE	ØD	R	ØP	A	L1 (max)	E	H	Bag Qty
322.04.04.M5	4	M5 cil.	10,4	3,5	26,5	15,9	8	10
321.04.04.18		G1/8	10,4	8	36	18,1	10	10
322.04.06.M5	6	M5 cil.	12,4	3,5	26,5	15,9	8	10
321.04.06.18		G1/8	12,4	8	36	18,1	10	10
321.04.08.18	8	G1/8	14,4	8	36	18,1	10	10
321.04.08.14		G1/4	14,4	11,2	41,5	20,1	14	5
321.04.10.38	10	G3/8	17,6	13,3	47	22,5	19	5
321.04.12.12	12	G1/2	21,2	16,5	52	24,9	24	5

**322.01**

Regolatore di flusso 90° cilindrico (con anello rosso)  
**versione per cilindro**  
Cylindrical elbow speed controller (with red sleeve)  
**for cylinder version**

**322.02**

Regolatore di flusso 90° cilindrico (con anello nero)  
**versione per valvola**  
Cylindrical elbow speed controller (with black sleeve)  
**for valve version**

CODICE-CODE	ØD	R	ØP	A	L2	E	H	Bag Qty
322.01.04.M5	4	M5	10	3,5	26,5	18,5	8	10
322.01.04.18		G1/8	10	6	36,3	20,2	14	10
322.01.04.14		G1/4	10	8	43,7	23,2	17	10
322.01.06.M5	6	M5	12,4	3,5	26,5	18,5	8	10
322.01.06.18		G1/8	12,4	6	36,6	22,1	14	10
322.01.06.14		G1/4	12,4	8	43,7	24,2	17	10
322.01.08.18	8	G1/8	14,4	6	36,6	23,7	14	10
322.01.08.14		G1/4	14,4	8	43,7	26,9	17	10
322.01.08.38		G3/8	14,4	10	48,3	27,3	20	5
322.01.10.14	10	G1/4	17,6	8	43,7	29,1	17	5
322.01.10.38		G3/8	17,6	10	48,3	29,5	20	5
322.01.10.12		G1/2	17,6	12	47,8	32,4	24	5
322.01.12.38	12	G3/8	21	10	48,3	34,7	20	5
322.01.12.12		G1/2	21	12	47,8	34,7	24	5

CODICE-CODE	ØD	R	ØP	A	L2	E	H	Bag Qty
322.02.04.M5	4	M5	10	3,5	26,5	18,5	8	10
322.02.04.18		G1/8	10	6	36,3	20,2	14	10
322.02.06.M5	6	M5	12,4	3,5	26,5	18,5	8	10
322.02.06.18		G1/8	12,4	6	36,6	22,1	14	10
322.02.08.18	8	G1/8	14,4	6	36,6	23,7	14	10
322.02.08.14	8	G1/4	14,4	8	43,7	26,9	17	10
322.02.10.38	10	G3/8	17,6	10	48,3	29,5	20	10
322.02.12.12	12	G1/2	21	12	47,8	34,7	24	5

**322.07**

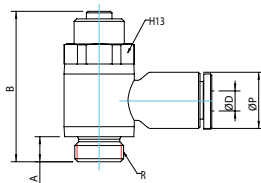
Regolatore di flusso 90° compatto  
**versione per cilindro**  
Compact elbow speed controller  
**Cylinder version**



CODICE-CODE	ØD	R	ØP	A	B	Bag Qty
322.07.04.18	4	G1/8	9	5	30	10
322.07.04.14		G1/4	9	6	32,5	10
322.07.06.18	6	G1/8	11,2	5	30	10
322.07.06.14		G1/4	11,2	6	32,5	10
322.07.08.18	8	G1/8	13,6	5	30	10
322.07.08.14		G1/4	13,6	6	32,5	5
322.07.10.38	10	G3/8	16,3	7	45,2	5
322.07.12.12	12	G1/2	19,7	8,5	51,7	5

**322.08**

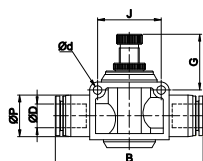
Regolatore di flusso 90° compatto  
**versione per valvola**  
Compact elbow speed controller  
**Valve version**



CODICE-CODE	ØD	R	ØP	A	B	Bag Qty
322.08.04.18	4	G1/8	9	5	30	10
322.08.06.18	6	G1/4	9	6	32,5	10
322.08.06.14		G1/8	11,2	5	30	10
322.08.08.18	8	G1/4	11,6	6	32,5	10
322.08.08.14		G1/8	13,6	5	30	10

**321.05 - 321.06**

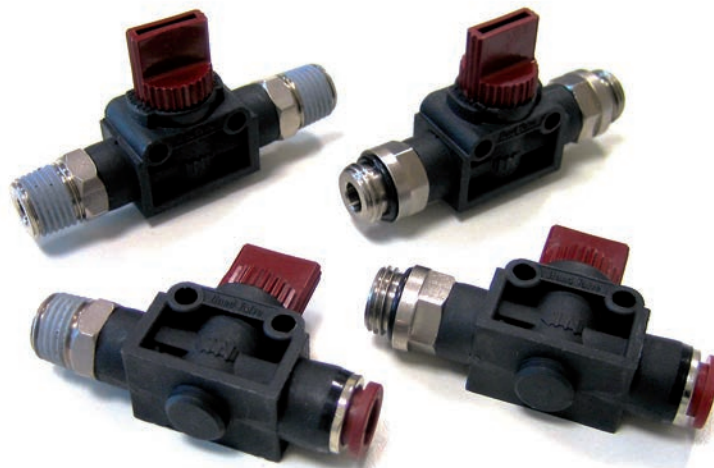
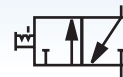
Regolatore di flusso in linea  
In line speed controller

**321.05 versione unidirezionale - in line unidirectional version**

CODICE-CODE	ØD	ØP	B	Ød	G	J	Bag Qty
321.05.04	4	10	38,4	3,2	13,5	14	10
321.05.06	6	12,4	47,2	4,3	18,5	20	5
321.05.08	8	14,4	51,8	4,3	19	22	5
321.05.10	10	17,6	59,6	4,3	23	26	5
321.05.12	12	21	71,4	4,3	20,5	32	4

**321.06 versione bidirezionale - in line bidirectional version**

CODICE-CODE	ØD	ØP	B	Ød	G	J	Bag Qty
321.06.04	4	10	38,4	3,2	13,5	14	10
321.06.06	6	12,4	47,2	4,3	18,5	20	5
321.06.08	8	14,4	51,8	4,3	19	22	5
321.06.10	10	17,6	59,6	4,3	23	26	5
321.06.12	12	21	71,4	4,3	20,5	32	4

**Dati tecnici - Technical data**

Applicazioni - Applications	aria compressa/vuoto - compressed air/vacuum
Fluido - Fluid	aria (no altri fluidi) - air (no other gases or liquids)
Pressione di lavoro - Working pressure	0 - 10 bar
Depressione - Vacuum	-750 mmHg (10 Torr)
Range di temperatura - Temperature range	- 10 ÷ 60 °C
Tubi consigliati - Recommended hoses	Nylon, Poliuretano - Nylon, Polyurethane

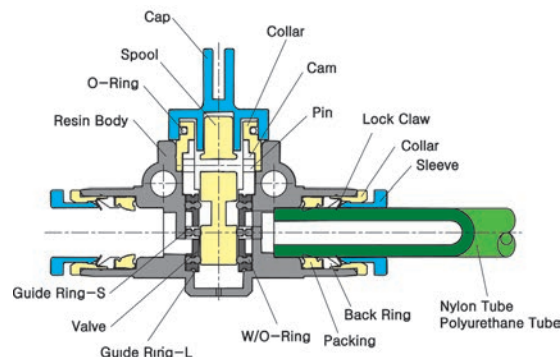
Guida alle referenze  
Guide to references

341 . 01 . 06 . 18

Serie  
Line341 = Valvole manuali  
a 3 vie  
Hand valvesTipo di raccordo  
Fitting typeConsultare le tabelle alle  
pagine che seguono  
Please check it in following  
pagesFiletto  
Thread Size18 = 1/8  
14 = 1/4  
38 = 3/8  
12 = 1/2  
M5 = M5∅ Tubo  
Tube diameter04 = tubo 4 mm  
4mm tube  
06 = tubo 6 mm  
6mm tube  
08 = tubo 8 mm  
8mm tube  
10 = tubo 10 mm  
10mm tube  
12 = tubo 12 mm  
12mm tube

Le valvole 3/2 serie 341 hanno la funzione di chiudere l'alimentazione e contemporaneamente scaricare il circuito di valle. Sono disponibili nella versione tubo/tubo e con connessione filettata.

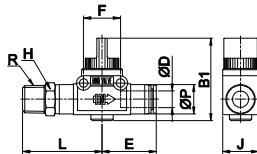
The 3 ways hand valves of the 341 line have the function to close the air flow input and to release the downstream circuit. There are available with intermediate version (hose/hose) and with tread connections.





### 341.01

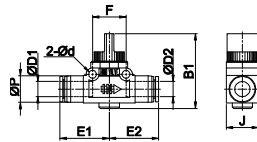
Valvola manuale maschio/automatico  
Conical straight hand valve



CODICE-CODE	ØD	R	ØP	E	L	H	B1	F	Bag Qty
341.01.06.18	6	G1/8	12,4	25,2	33,1	14	40,5	18,1	5
341.01.06.14		G1/4	12,4	25,2	37,1	14	40,5	18,1	5
341.01.08.18	8	G1/8	14,4	27,7	33,1	14	40,5	18,1	5
341.01.08.14		G1/4	14,4	27,7	37,1	14	40,5	18,1	5
341.01.08.38		G3/8	14,4	27,7	38,1	17	40,5	18,1	5
341.01.10.14	10	G1/4	17,6	31,4	40,8	17	40,4	24,4	5
341.01.10.38		G3/8	17,6	31,4	41,8	17	40,4	24,4	5
341.01.10.12		G1/2	17,6	31,4	44,8	21	40,4	24,4	5
341.01.12.38	12	G3/8	21	34,3	41,8	17	40,4	24,4	5
341.01.12.12		G1/2	21	34,3	44,8	21	40,4	24,4	5

### 341.04

Valvola manuale automatico/automatico  
Straight union hand valve



CODICE-CODE	ØD1	ØD2	ØP	E1	E2	Ød	B1	F	Bag Qty
341.04.06.06	6	6	12,4	25,2	25,2	4,2	40,5	18,1	50
341.04.08.08	8	8	14,4	27,7	27,7	4,2	40,5	20	50
341.04.10.10	10	10	17,6	31,4	31,4	4,2	40,4	24,4	25
341.04.12.12	12	12	21	34,3	34,3	4,2	40,4	24,4	20



## Dati tecnici - Technical data

Fluido - Fluid	acqua e aria - water and air
Pressione di lavoro - Working pressure	0- 10 bar
Depressione - Vacuum	-750 mmHg (10 Torr)
Range di temperatura - Temperature range	-10 ÷ 60 °C
Tubi consigliati - Recommended hoses	Nylon, Poliuretano - Nylon, Polyurethane

Guida alle referenze  
Guide to references

351 . 01 . 06 . 06

Serie  
Line

351 = Rubinetto in polimero  
Ball valve  
352 = Rubinetto in metallo  
Metal ball valve

Tipo di raccordo  
Fitting type

Consultare le tabelle alle  
pagine che seguono  
Please check it in following  
pages

Filetto  
Thread Size

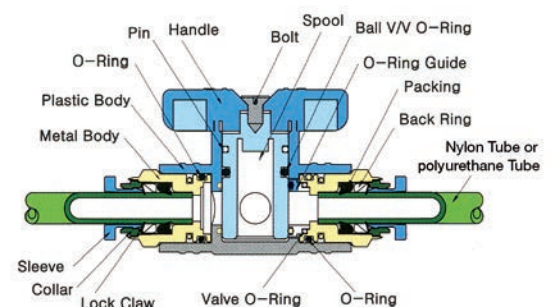
18 = 1/8  
14 = 1/4  
38 = 3/8  
12 = 1/2  
M5 = M5

Ø Tubo  
Tube diameter

06 = tubo 6 mm  
6mm tube  
08 = tubo 8 mm  
8mm tube  
10 = tubo 10 mm  
10mm tube  
12 = tubo 12 mm  
12mm tube

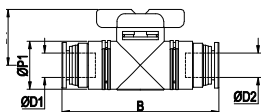
I rubinetti delle linee 351 e 352 sono stati studiati per rendere elegante, ergonomico e particolarmente versatile questo comune accessorio di interruzione del circuito.

The ball valves of the 351/352 lines have been studied in order to render elegant, ergonomic and particularly versatile this common cutoff circuit accessory.



**351.01**

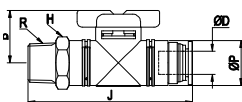
Rubinetto diritto aut/aut  
Union ball valve



CODICE-CODE	ØD1	ØD2	ØP	B	B1	Bag Qty
351.01.06.06	6	6	17	59,4	23	5
351.01.08.08	8	8	17	59,2	23	5
351.01.10.10	10	10	24	78,4	28	4
351.01.12.12	12	12	24	79,3	28	4

**351.03**

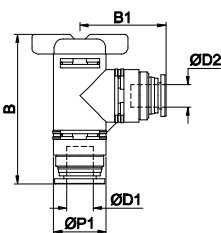
Rubinetto diritto aut/fil  
Straight ball valve



CODICE-CODE	ØD	R	ØP	H	J	B	Bag Qty
351.03.06.18	6	G1/8	17	17	60,4	23	5
351.03.06.14		G1/4	17	17	63,4	23	5
351.03.08.18	8	G1/8	17	17	60,3	23	5
351.03.08.14		G1/4	17	17	63,3	23	5
351.03.08.38		G3/8	17	17	64,3	23	5
351.03.10.14	10	G1/4	24	24	82,4	28	4
351.03.10.38		G3/8	24	24	83,4	28	4
351.03.10.12		G1/2	24	24	87,4	28	4
351.03.12.38	12	G3/8	24	24	83,85	28	4
351.03.12.12		G1/2	24	24	87,85	28	4

**351.04**

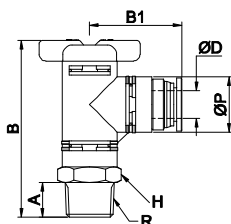
Rubinetto 90° aut/aut  
Elbow union ball valve



CODICE-CODE	ØD1	ØD2	ØP	B	B1	Bag Qty
351.04.06.06	6	6	17	52,75	29,75	5
351.04.08.08	8	8	17	52,65	30,25	5
351.04.10.10	10	10	24	39,3	39,3	4
351.04.12.12	12	12	24	40,3	40,3	4

**351.06**

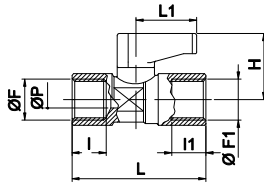
Rubinetto 90° aut/fil  
Elbow ball valve



CODICE-CODE	ØD	R	ØP	A	H	B	B1	Bag Qty
351.06.06.18	6	G1/8	17	8	17	53,75	29,75	5
351.06.06.14		G1/4	17	11	17	56,75	29,75	5
351.06.08.18	8	G1/8	17	8	17	53,75	30,25	5
351.06.08.14		G1/4	17	11	17	56,75	30,25	5
351.06.08.38		G3/8	17	12	17	57,75	30,25	5
351.06.10.14	10	G1/4	24	11	24	72,1	40,1	4
351.06.10.38		G3/8	24	12	24	73,1	40,1	4
351.06.10.12		G1/2	24	15	24	77,1	40,1	4
351.06.12.38	12	G3/8	24	12	24	73,1	40	4
351.06.12.12		G1/2	24	15	24	77,1	40	4

**352.07**

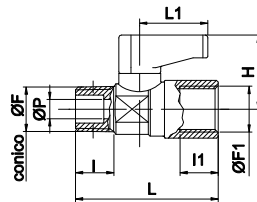
Rubinetto F/F metallo  
Female ball valve



CODICE-CODE	F	F1	P	I	I1	L	L1	H	CH	Bag Qty
352.07.18.18	1/8	1/8	5,5	8	8	36,5	19	21,5	14	5
352.07.14.14	1/4	1/4	5,5	11	11	43	19	21,5	14	5
352.07.38.38	3/8	3/8	7	11,5	16	48	19	22,5	18	2
352.07.12.12	1/2	1/2	10	16	23	59	25	32	22	2

**352.08**

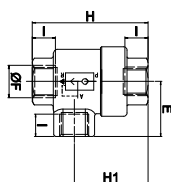
Rubinetto M/F metallo  
M/F ball valve



CODICE-CODE	F	F1	P	I	I1	L	L1	H	CH	Bag Qty
352.08.18.18	1/8	1/8	5,5	8	8	35,5	19	21,5	14	5
352.08.14.14	1/4	1/4	5,5	11	11	40,5	19	21,5	14	5
352.08.38.38	3/8	3/8	7	13	16	48	19	22,5	18	2
352.08.12.12	1/2	1/2	10	17	23	58	25	32	22	2

## 361.01

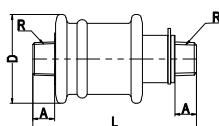
Valvola di scarico rapido  
Quick exhaust valve



CODICE-CODE	F	I	H	H 1	CH	CH 1	E	Bag Qty
361.01.18	1/8	8	42	28	14	14	19,5	5
361.01.14	1/4	11	53	34,5	19	19	25	5
361.01.38	3/8	12	58	36	21	21	26	2
361.01.12	1/2	14	71	44	26	26	35	2
361.01.34	3/4	18	86	52	32	32	38,5	2

## 341.05

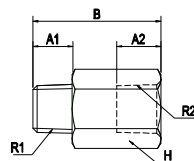
Valvola a corsoio  
Hand slide valve



CODICE-CODE	R	ØD	L	A	I	Bag Qty
341.05.18	1/8	24	53,6	7,5	14	5
341.05.14	1/4	34	71,9	8,5	17	4
341.05.38	3/8	45	83	11	26	3
341.05.12	1/2	45	85	12	26	3

## 331.03

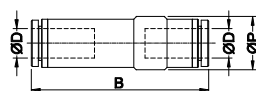
Valvola unidirezionale M/F  
M/F check valve



CODICE-CODE	R1	R2	H	A1	A2	B	Bag Qty
331.03.18.18	1/8	1/8	14	6	9	22,8	10
331.03.14.14	1/4	1/4	17	8	11	28,5	10
331.03.38.38	3/8	3/8	24	10	13	54,3	5
331.03.12.12	1/2	1/2	27	12	16	63,1	5

## 331.05

Valvola unidirezionale aut/aut  
Straight union check valve



CODICE-CODE	ØD	ØP	B	Bag Qty
331.05.04.04	4	10	41,1	10
331.05.06.06	6	12,4	47,2	10
331.05.08.08	8	14,4	51,6	10
331.05.10.10	10	25	77,3	5
331.05.12.12	12	25	80	5

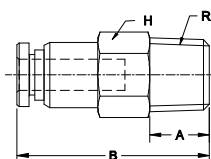
## 331.01

Valvola unidirezionale "out" aut/fil  
Conical check "out" valve



## 331.02

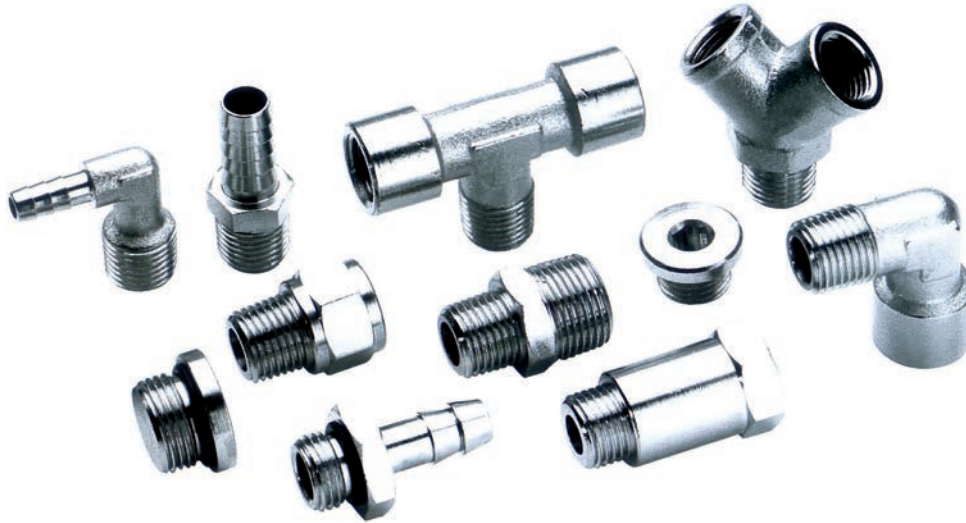
Valvola unidirezionale "in" aut/fil  
Conical check "in" valve



CODICE-CODE	ØD	R	H	ØP	B	A	Bag Qty
331.01.04.18	4	1/8"	10	9,6	24,7	8	10
331.01.06.18	6	1/8	12	11,6	28,6	8	10
331.01.06.14		1/4	14	11,6	28,6	11	10
331.01.08.18	8	1/8	14	13,6	30,5	8	10
331.01.08.14		1/4	14	13,6	35,1	11	10
331.01.10.38	10	3/8	24	25	62,2	12	5
331.01.12.38	12	3/8	24	25	64,4	12	5
331.01.12.12		1/2	27	28	70,5	15	5

CODICE-CODE	ØD	R	H	ØP	B	A	Bag Qty
331.02.04.18	4	1/8"	10	9,6	24,7	8	10
331.02.06.18	6	1/8	12	11,6	28,6	8	10
331.02.06.14		1/4	14	11,6	28,6	11	10
331.02.08.18	8	1/8	14	13,6	30,5	8	10
331.02.08.14		1/4	14	13,6	35,1	11	10
331.02.10.38	10	3/8	24	25	62,2	12	10
331.02.12.38	12	3/8	24	25	64,4	12	5
331.02.12.12		1/2	27	28	70,5	15	5



**Dati tecnici - Technical data**

Applicazioni - Applications	Circuiti pneumatici, oleodinamici e idraulici Pneumatic and hydraulic systems
Pressione di lavoro - Working pressure	60 bar
Depressione - Vacuum	-
Range di temperatura - Temperature range	-10 ÷ 70 °C

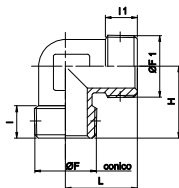
Guida alle referenze  
Guide to references

311 . 01 . - . -

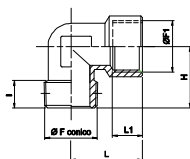
Serie  
Line311 = Raccordi tradizionali  
Standard fittingsModello  
TypeConsultare le tabelle  
nelle pagine seguenti  
Please check it in the  
following pagesFiletto  
Thread  
size18 = 1/8  
14 = 1/4  
38 = 3/8  
12 = 1/2  
M5 = M5Filetto  
Thread  
size18 = 1/8  
14 = 1/4  
38 = 3/8  
12 = 1/2  
M5 = M5∅ Tubo  
Tube  
diameter06 = tubo 6 mm  
07 = tubo 7 mm  
08 = tubo 8 mm  
09 = tubo 6 mm  
10 = tubo 10 mm  
12 = tubo 12 mm

La linea dei raccordi tradizionali comprende una vasta gamma di prodotti per rispondere alle più svariate esigenze applicative.

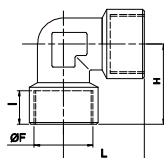
The traditional fittings line have a large products range in order to meet the most varied application needs.

**311.01**Curva M/M conica  
Conical elbow male

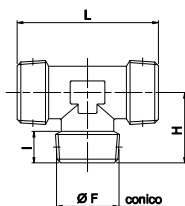
CODICE-CODE	F	F1	I	I1	H	L	CH	Bag Qty
311.01.18	1/8	1/8	8	8	18,5	18,5	10	20
311.01.14	1/4	1/4	11	11	23,5	23,5	13	10
311.01.14.18	1/4	1/8	11	8	21,5	19	10	20
311.01.38	3/8	3/8	11,5	11,5	26	26	17	10
311.01.12	1/2	1/2	14	14	31	31	21	5

**311.02**Curva M/F conica  
M/F conical elbow

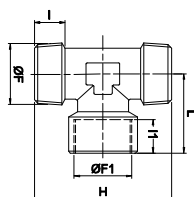
CODICE-CODE	F	F1	I	I1	H	L	CH	Bag Qty
311.02.18	1/8	1/8	8	8	18,5	21	10	20
311.02.14	1/4	1/4	11	11	23,5	25,5	13	10
311.02.14.18	1/4	1/8	11	8	21,5	21	10	20
311.02.38	3/8	3/8	11,5	11,5	26	28	17	5
312.01.12	1/2	1/2	14	14	31	33,5	21	5

**311.03**Curva F/F conica  
F/F conical elbow

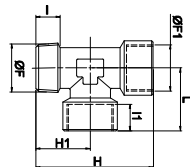
CODICE-CODE	F	I	H	L	CH	Bag Qty
311.03.18	1/8	8	21	21	10	20
311.03.14	1/4	11	25,5	25,5	13	10
311.03.38	3/8	11,5	28	28	17	5
311.03.12	1/2	14	33,5	33,5	21	5

**311.04**T M/M/M conico  
"T" conical male

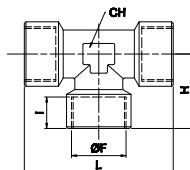
CODICE-CODE	F	I	H	L	CH	Bag Qty
311.04.18	1/8	8	18,5	37	10	10
311.04.14	1/4	11	23,5	47	13	5
311.04.38	3/8	11,5	26	52	17	5
311.04.12	1/2	14	31	62	21	5

**311.05**T M/F/M conico  
"T" conical M/F/M

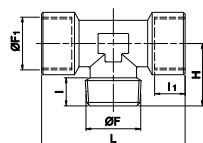
CODICE-CODE	F	F1	I	I1	H	L	CH	Bag Qty
311.05.18	1/8	1/8	8	8	37	21	10	10
311.05.14	1/4	1/4	11	11	47	25,5	13	5
311.05.38	3/8	3/8	11,5	11,5	52	28	17	5
311.05.12	1/2	1/2	14	14	62	33,5	21	5

**311.06**T M/F/F conico  
"T" conical M/F/F

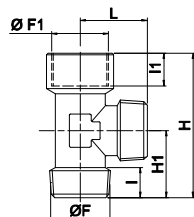
CODICE-CODE	F	F1	I	I1	H	H1	L	CH	Bag Qty
311.06.18	1/8	1/8	8	8	39,5	18,5	21	10	10
311.06.14	1/4	1/4	11	11	49	23,5	25,5	13	5
311.06.38	3/8	3/8	11,5	11,5	54	26	28	17	5
311.06.12	1/2	1/2	14	14	64,5	31	33,5	21	5

**311.07**T F/F/F conico  
"T" conical female

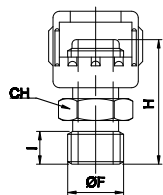
CODICE-CODE	F	I	H	L	CH	Bag Qty
311.07.18	1/8	8	21	42	10	10
311.07.14	1/4	11	25,5	51	13	5
311.07.38	3/8	11,5	28	56	17	5
311.07.12	1/2	14	33,5	67	21	5

**311.08**T f/m/f conico  
"T" conical F/M/F

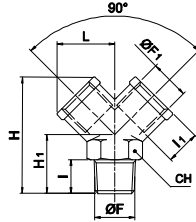
CODICE-CODE	F	F1	I	I1	H	L	CH	Bag Qty
311.08.18	1/8	1/8	8	8	18,5	42	10	10
311.08.14	1/4	1/4	11	11	23,5	51	13	5
311.08.38	3/8	3/8	11,5	11,5	26	56	17	5
311.08.12	1/2	1/2	14	14	31	67	21	5

**311.09**T f/m/m conico  
"T" conical F/M/M

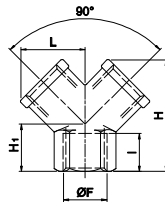
CODICE-CODE	F	F1	I	I1	H	H1	L	CH	Bag Qty
311.09.18	1/8	1/8	8	8	39,5	18,5	18,5	10	10
311.09.14	1/4	1/4	11	11	49	23,5	23,5	13	5
311.09.38	3/8	3/8	11,5	11,5	54	26	26	17	5
311.09.12	1/2	1/2	14	14	64,5	31	31	21	5

**311.36**Raccordo dado fresato  
Milled fitting nut

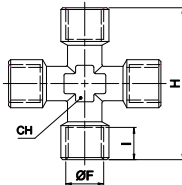
CODICE-CODE	F	I	H	CH	Bag Qty
311.36.14	1/4	10	28,5	15	2

**311.10**Y F/M/F  
"Y" conical F/M/F

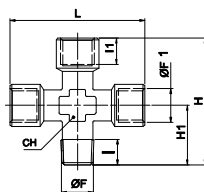
CODICE-CODE	F	F 1	I	I 1	H 1	L	H	CH	Bag Qty
311.10.18	1/8	1/8	8	8	16	14,5	32	13	10
311.10.14	1/4	1/4	11	11	20	18	38	17	10
311.10.38	3/8	3/8	11,5	11,5	22	20,5	42,5	20	5
311.10.12	1/2	1/2	14	14	27	26,5	53	25	5

**311.11**Y F/F/F  
"Y" female

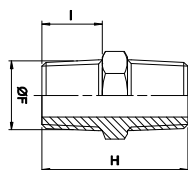
CODICE-CODE	F	I	H 1	L	H 1	CH	Bag Qty
311.11.18	1/8	8	12	14,5	26,5	13	10
311.11.14	1/4	11	14	18	32	17	10
311.11.38	3/8	11,5	16	20,5	37	20	5
311.11.12	1/2	14	19	26,5	45	25	5

**311.13**Croce femmina  
Female cross

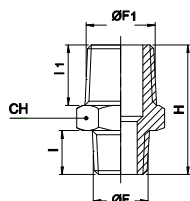
CODICE-CODE	F	I	H	CH	Bag Qty
311.13.18	1/8	8	42	10	10
311.13.14	1/4	11	51	13	5
311.13.38	3/8	11,5	56	17	5
311.13.12	1/2	14	67	21	2

**311.12**Croce M/F/F/F  
M/F/F/F conical cross

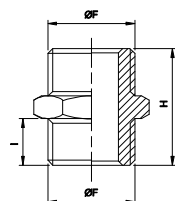
CODICE-CODE	F	F 1	I	I 1	H	H 1	L	CH	Bag Qty
311.12.18	1/8	1/8	8	8	39,5	18,5	42	10	10
311.12.14	1/4	1/4	11	11	49	23,5	51	13	5
311.12.38	3/8	3/8	11,5	11,5	54	26	56	17	5
311.12.12	1/2	1/2	14	14	64,5	31	67	21	2

**311.14**Nipplo M/M conico  
Conical male nipple

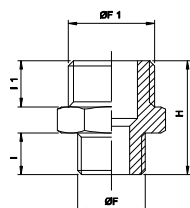
CODICE-CODE	F	I	H	CH	Bag Qty
311.14.18	1/8	8	20,5	12	20
311.14.14	1/4	11	27	14	20
311.14.38	3/8	11,5	28	17	10
311.14.12	1/2	14	33,5	22	5
311.14.34	3/4	16,5	39,5	27	5
311.14.01	1"	19	45,5	34	5

**311.16**Nippolo M/M conico ridotto  
Conical reduction male nipple

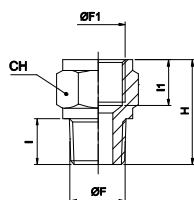
CODICE-CODE	F	F 1	I	I 1	H	CH	Bag Qty
311.16.18.14	1/8	1/4	8	11	24	14	20
311.16.14.38	1/4	3/8	11	11,5	27,5	17	10
311.16.14.12	1/4	1/2	11	14	30,5	22	10
311.16.38.12	3/8	1/2	11,5	14	31	22	10
311.16.12.34	1/2	3/4	14	16,5	37	27	5
311.16.34.01	3/4	1"	16,5	19	42,5	34	5

**311.15**Nippolo M/M cilindrico  
Cylindrical male nipple

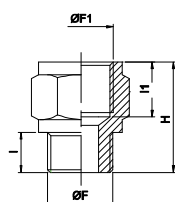
CODICE-CODE	F	I	H	CH	Bag Qty
311.15.M5	M5	4	11,5	8	20
311.15.18	1/8	6	16,5	14	20
311.15.14	1/4	8	21	17	20
311.15.38	3/8	9	23	19	10
311.15.12	1/2	10	25,5	24	10

**311.17**Nippolo M/M cilindrico ridotto  
Cylindrical male nipple

CODICE-CODE	F	F 1	I	I 1	H	CH	Bag Qty
311.17.M5.18	M5	1/8	4	6	14,5	14	20
311.17.18.14	1/8	1/4	6	8	19	17	20
311.17.18.38	1/8	3/8	6	9	20	19	20
311.17.14.38	1/4	3/8	8	9	22	19	10
311.17.14.12	1/4	1/2	8	10	23,5	24	10
311.17.38.12	3/8	1/2	9	10	24,5	24	10
311.17.12.34	1/2	3/4	10	11	27,5	30	5
311.17.34.01	3/4	1"	12	11	32	36	5

**311.18**Nippolo M/F conico  
M/F conical reducer

CODICE-CODE	F	F 1	I	I 1	H	CH	Bag Qty
311.18.18.18	1/8	1/8	8	8	18	14	20
311.18.18.14	1/8	1/4	8	11	21,5	17	20
311.18.14.14	1/4	1/4	11	11	24,5	17	10
311.18.14.38	1/4	3/8	11	11,5	25,5	22	10
311.18.14.12	1/4	1/2	11	14	29	24	5
311.18.38.38	3/8	3/8	11,5	11,5	26	22	10
311.18.38.12	3/8	1/2	11,5	14	29,5	24	5
311.18.12.12	1/2	1/2	14	14	32	26	5

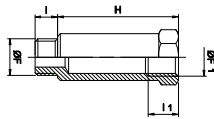
**311.19**Nippolo M/F cilindrico  
M/F cylindrical reducer

CODICE-CODE	F	F 1	I	I 1	H	CH	Bag Qty
311.19.18.18	1/8	1/8	6	8	16	14	20
311.19.18.14	1/8	1/4	6	11	19,5	17	20
311.19.14.14	1/4	1/4	8	11	21,5	17	20
311.19.14.38	1/4	3/8	8	11,5	22,5	22	20
311.19.14.12	1/4	1/2	8	14	26	24	10
311.19.38.38	3/8	3/8	9	11,5	23,5	22	10
311.19.38.12	3/8	1/2	9	14	27	24	10
311.19.12.12	1/2	1/2	10	14	28	26	5



**311.20**

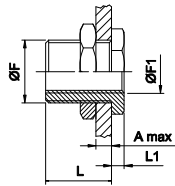
Colonna M/F  
M/F h22 cylindrical extension reducer



CODICE-CODE	F	F 1	I	I 1	H	L	CH	Bag Qty
311.20.18.18	1/8	1/8	6	8	16	22	14	20
311.20.18.18	1/8	1/8	6	8	45	51	14	10
311.20.14.14	1/4	1/4	8	11	27	35	17	10
311.20.14.141	1/4	1/4	8	11	43	51	17	5

**311.21**

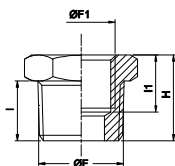
Passaparete M/F  
F/F bulkhead



CODICE-CODE	F	F 1	Amax	L	L 1	CH	CH 1	Bag Qty
311.21.M5	M10X1	M5	7	10,5	3,5	14	14	10
311.21.18	M16X1,5	1/8	10	14	4	19	22	10
311.21.14	M20X1,5	1/4	16	21	4	24	27	5
311.21.38	M26X1,5	3/8	15	21	5	30	32	5
311.21.12	M28X1,5	1/2	21	27	6	32	36	5

**311.22**

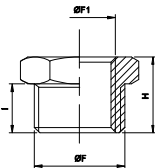
Riduzione M/F conica  
M/F conical reducer



CODICE-CODE	F	F 1	I	I 1	H	CH	Bag Qty
311.22.14.18	1/4	1/8	11	8	16	14	20
311.22.38.18	3/8	1/8	11,5	8	16,5	17	20
311.22.38.14	3/8	1/4	11,5	11	16,5	17	20
311.22.12.18	1/2	1/8	14	8	19,5	22	10
311.22.12.14	1/2	1/4	14	11	19,5	22	10
311.22.12.38	1/2	3/8	14	11,5	19,5	22	10
311.22.34.12	3/4	1/2	16,5	14	23	27	5

**311.23**

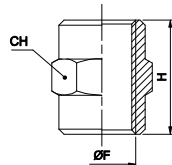
Riduzione M/F cilindrica  
M/F cylindrical reducer



CODICE-CODE	F	F 1	I	H	CH	Bag Qty
311.23.18.M5	1/8	M5	6	10,5	14	20
311.23.14.18	1/4	1/8	8	13	17	20
311.23.38.18	3/8	1/8	9	14	19	20
311.23.38.14	3/8	1/4	9	14	19	20
311.23.12.18	1/2	1/8	10	15,5	24	10
311.23.12.14	1/2	1/4	10	15,5	24	10
311.23.12.38	1/2	3/8	10	15,5	24	10
311.23.34.12	3/4	1/2	11	17,5	30	5

**311.24**

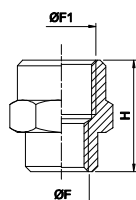
Manicotto F/F  
F/F sleeve



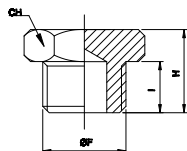
CODICE-CODE	F	H	CH	Bag Qty
311.24.M5	M5	11	8	20
311.24.18	1/8	15	14	20
311.24.14	1/4	22	17	20
311.24.38	3/8	23	22	10
311.24.12	1/2	28	26	10
311.24.34	3/4	32	32	5

**311.25**

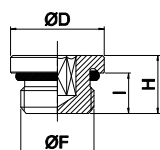
Manicotto F/F ridotto  
F/F sleeve reducer



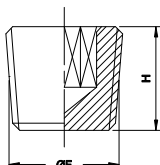
CODICE-CODE	F	F 1	H	CH	Bag Qty
311.25.M5.18	M5	1/8	13,5	14	10
311.25.18.14	1/8	1/4	19	17	10
311.25.18.38	1/8	3/8	20	22	10
311.25.14.38	1/4	3/8	22,5	22	10
311.25.14.12	1/4	1/2	26	24	10
311.25.38.12	3/8	1/2	26	24	10

**311.26**Tappo M esagonale  
Male plug

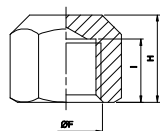
CODICE-CODE	F	I	H	CH	Bag Qty
311.26.18	1/8	6	10	14	20
311.26.14	1/4	8	12,5	17	20
311.26.38	3/8	9	13,5	19	20
311.26.12	1/2	10	15,5	24	10

**311.28**Tappo M cilindrico c/oring  
Cylindrical male plug with o-ring

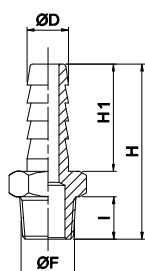
CODICE-CODE	F	I	H	D	CH	Bag Qty
311.28.18	1/8	6,5	9,5	14	5	20
311.28.14	1/4	8	11,5	17	6	20
311.28.38	3/8	9	12,5	20	8	20
311.28.12	1/2	10	14	26	10	10

**311.29**Grano conico in ottone  
Conical brass male plug

CODICE-CODE	F	H	CH	Bag Qty
311.29.18	1/8	7,5	5	20
311.29.14	1/4	10	6	20
311.29.38	3/8	11	8	20
311.29.12	1/2	13	10	10

**311.30**Tappo femmina  
Plug female

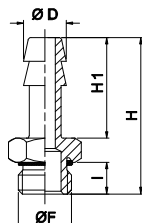
CODICE-CODE	F	I	H	CH	Bag Qty
311.30.18	1/8	8	11,5	14	20
311.30.14	1/4	11	15	17	20
311.30.38	3/8	11,5	15,5	20	10
311.30.12	1/2	14	20	24	10

**311.31**Portagomma maschio conico  
Conical male hose

CODICE-CODE	D	F	I	H	H 1	CH	Bag Qty
311.31.06.18	6	1/8	8	31,5	19	12	20
311.31.06.14	6	1/4	11	35	19	14	20
311.31.07.18	7	1/8	8	31,5	19	12	20
311.31.07.14	7	1/4	11	35	19	14	20
311.31.08.18	8	1/8	8	31,5	19	12	20
311.31.08.14	8	1/4	11	35	19	14	20
311.31.09.18	9	1/8	8	31,5	19	12	20
311.31.09.14	9	1/4	11	35	19	14	20
311.31.09.38	9	3/8	11,5	35,5	19	17	20
311.31.09.12	9	1/2	14	38,5	19	22	10
311.31.10.14	10	1/4	11	36	20	14	20
311.31.10.38	10	3/8	11,5	36,5	20	17	20
311.31.10.12	10	1/2	14	39,5	20	22	20
311.31.12.38	12	3/8	11,5	36,5	20	17	10
311.31.12.12	12	1/2	14	39,5	20	22	10

### 311.32

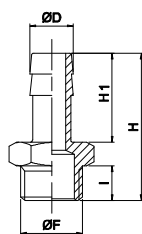
Portagomma maschio cilindrico c/oring  
Cylindrical male hose with o-ring



CODICE-CODE	D	F	I	H	H 1	CH	Bag Qty
311.32.06.18	6	1/8	6,5	30	19	14	20
311.32.06.14	6	1/4	8	32	19	17	20
311.32.07.18	7	1/8	6,5	30	19	14	20
311.32.07.14	7	1/4	8	32	19	17	20
311.32.08.18	8	1/8	6,5	30	19	14	20
311.32.08.14	8	1/4	8	32	19	17	20
311.32.09.18	9	1/8	6,5	30	19	14	20
311.32.09.14	9	1/4	8	32	19	17	20
311.32.09.38	9	3/8	9	33	19	20	20
311.32.12.14	12	1/4	8	33	20	17	10
311.32.12.38	12	3/8	9	34	20	20	10
311.32.12.12	12	1/2	10	35,5	20	24	10

### 311.33

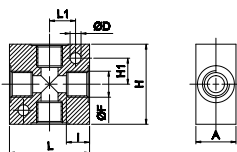
Portagomma cilindrico  
Cylindrical male hose



CODICE-CODE	D	F	I	H	H 1	CH	Bag Qty
311.33.06.18	6	1/8	6	29,5	19	12	20
311.33.06.14	6	1/4	8	32	19	14	20
311.33.07.18	7	1/8	6	29,5	19	12	20
311.33.07.14	7	1/4	8	32	19	14	20
311.33.08.18	8	1/8	6	29,5	19	12	20
311.33.08.14	8	1/4	8	32	19	14	20
311.33.08.38	8	3/8	9	33	19	19	20
311.33.09.14	9	1/4	8	32	19	14	20
311.33.09.38	9	3/8	9	33	19	19	20
311.33.10.14	10	1/4	8	33	20	14	20
311.33.10.38	10	3/8	9	34	20	19	20
311.33.12.14	12	1/4	8	33	20	14	20
311.33.12.38	12	3/8	9	34	20	19	10
311.33.12.12	12	1/2	10	35,5	20	22	10

### 311.34

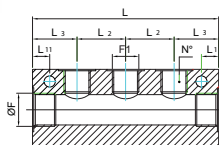
Partitore a 4 vie  
Cross manifold



CODICE-CODE	F	I	H	H 1	L	L 1	D	A	Bag Qty
311.34.18	1/8	8	25	8,5	25	8,5	4,5	16	10
311.34.14	1/4	11	40	13	40	13	5,5	20	5
311.34.38	3/8	11,5	50	17	50	17	5,5	25	2
311.34.12	1/2	14	50	17	50	17	5,5	30	2

### 311.35

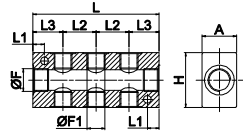
Partitore multiplo uscite 1 lato  
Multiple out-put 1 side manifold



CODICE-CODE	F	F 1	A	H	L 1	L 2	L 3	L	N°	Bag Qty
311.35.14.02	1/4	1/8	20	30	4,5	18	18	54	2	2
311.35.14.03	1/4	1/8	20	30	4,5	18	18	72	3	2
311.35.14.04	1/4	1/8	20	30	4,5	18	18	90	4	2
311.35.14.05	1/4	1/8	20	30	4,5	18	18	108	5	2
311.35.38.02	3/8	1/4	25	40	8,5	24	22	68	2	2
311.35.38.03	3/8	1/4	25	40	8,5	24	22	92	3	2
311.35.38.04	3/8	1/4	25	40	8,5	24	22	116	4	2
311.35.38.05	3/8	1/4	25	40	8,5	24	22	140	5	2

### 311.36

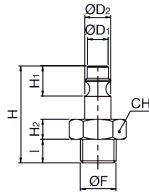
Partitore multiplo uscite 2 lati  
Multiple out-put 2 side manifold



CODICE-CODE	F	F1	A	H	L1	L2	L3	L	N°	Bag Qty
311.36.14.02	1/4	1/8	20	30	4,5	18	18	54	2+2	2
311.36.14.03	1/4	1/8	20	30	4,5	18	18	72	3+3	2
311.36.14.04	1/4	1/8	20	30	4,5	18	18	90	4+4	2
311.36.14.05	1/4	1/8	20	30	4,5	18	18	108	5+5	2
311.36.38.02	3/8	1/4	25	40	8,5	24	22	68	2+2	2
311.36.38.03	3/8	1/4	25	40	8,5	24	22	92	3+3	2
311.36.38.04	3/8	1/4	25	40	8,5	24	22	116	4+4	2
311.36.38.05	3/8	1/4	25	40	8,5	24	22	140	5+5	2

### 311.38.01

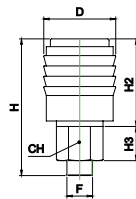
Innesto rapido maschio serie "Italia"  
Male quick coupling "Italy" series



CODICE-CODE	F	I	H	H1	H2	D1	D2	CH
311.38.01.14	1/4	8	37	14	5	7,5	12	14
311.38.01.38	3/8	8	37	14	5	7,5	12	17

### 311.38.02

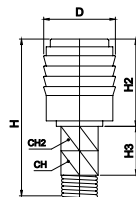
Rubinetto rapido a sfera serie "Italia"  
Thread quick coupling "Italy" series



CODICE-CODE	F	H	H1	H2	D	CH
311.38.02.14	1/4	51	25	13	22,7	15
311.38.02.38	3/8	45	25	5	22,7	17
311.38.02.12	1/2	47	25	7	22,7	21

### 311.38.03

Rubinetto rapido a sfera spirale serie "Italia"  
Spring quick coupling "Italy" series



CODICE-CODE	F	H	H1	H2	D	CH	CH1
311.38.03.08	8x6	138	25	23,5	22,7	15	13
311.38.03.10	10x8	138	25	23,5	22,7	15	15
311.38.03.12	12x10	140	25	23,5	22,7	15	17



## Dati tecnici - Technical data

Applicazioni - Applications	Circuiti pneumatici, oleodinamici e idraulici Pneumatic and hydraulic systems
Pressione di lavoro - Working pressure	vuoto $\pm$ 18 bar - vacuum $\pm$ 18 bar
Range di temperatura - Temperature range	Vedi caratteristiche dei tubi impiegati See features hose used
Tubi consigliati - Recommended hoses	Nylon, Poliuretano o Rilsan - Nylon, Polyurethane or Rilsan

Guida alle referenze  
Guide to references

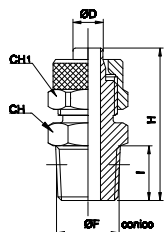
312 . 01 . 04 . 18

Serie  
Line312 = Raccordo  
a calzamento  
Quick fittingTipo di raccordo  
Fitting typeConsultare le tabelle alle  
pagine che seguono  
Please check it in following  
pagesFiletto  
Thread Size18 = 1/8  
14 = 1/4  
38 = 3/8  
12 = 1/2  
M5 = M5Ø Tubo  
Tube diameter04 = tubo 4/2,7 mm  
06 = tubo 6/4 mm  
08 = tubo 8/6 mm  
10 = tubo 10/8 mm  
12 = tubo 12/10 mm  
15 = tubo 15/12,5 mm

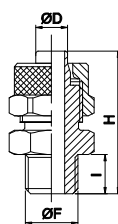
Il raccordo a calzamento rimane ancora una valida alternativa al raccordo automatico in presenza di applicazioni particolarmente gravose.

The quick fitting remains a valid alternative to the push-in fitting in the presence of severe demanding applications.

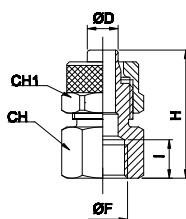


**312.01**Maschio diritto conico  
Conical straight male

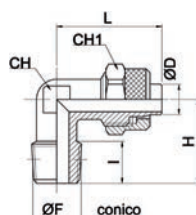
CODICE-CODE	D	F	I	H	CH	CH 1	Bag Qty
312.01.04.18	4/2,7	1/8	8	23,8	12	8	10
312.01.05.18	5/3	1/8	8	25	12	8	20
312.01.06.18	6/4	1/8	8	27,5	12	12	20
312.01.06.14	6/4	1/4	11	31	14	12	10
312.01.06.38	6/4	3/8	11,5	31,5	17	12	10
312.01.08.18	8/6	1/8	8	27,5	12	14	10
312.01.08.14	8/6	1/4	11	31	14	14	10
312.01.08.38	8/6	3/8	11,5	31,5	17	14	10
312.01.10.18	10/8	1/8	8	29,5	14	16	10
312.01.10.14	10/8	1/4	11	32,5	14	16	10
312.01.10.38	10/8	3/8	11,5	33	17	16	10
312.01.10.12	10/8	1/2	14	36	22	16	5
312.01.12.38	12/10	3/8	11,5	34,5	17	18	10
312.01.12.12	12/10	1/2	14	37,5	22	18	5
312.01.15.12	15/12,5	1/2	14	39,5	22	22	5

**312.02**Maschio diritto cilindrico  
Cylindrical straight male

CODICE-CODE	D	F	I	H	CH	CH 1	Bag Qty
312.02.05.M5	5/3	M5	4	20	8	8	20
312.02.06.M5	6/4	M5	4	21	8	9	20
312.02.05.18	5/3	1/8	6	23	14	8	20
312.02.06.18	6/4	1/8	6	25,5	14	12	20
312.02.06.14	6/4	1/4	8	28	17	12	20
312.02.06.38	6/4	3/8	9	29	19	12	10
312.02.08.18	8/6	1/8	6	25,5	14	14	10
312.02.08.14	8/6	1/4	8	28	17	14	10
312.02.08.38	8/6	3/8	9	29	19	14	10
312.02.10.18	10/8	1/8	6	27	14	16	10
312.02.10.14	10/8	1/4	8	29,5	17	16	10
312.02.10.38	10/8	3/8	9	30,5	19	16	10
312.02.10.12	10/8	1/2	10	32	24	16	10
312.02.12.38	12/10	3/8	9	32	19	18	10
312.02.12.12	12/10	1/2	10	33,5	24	18	5
312.02.15.12	15/12,5	1/2	10	33,5	24	22	5

**312.04**Femmina diritta cilindrica  
Cylindrical straight female

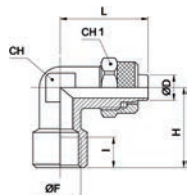
CODICE-CODE	D	F	I	H	CH	CH 1	Bag Qty
312.04.05.18	5/3	1/8	8	22,5	14	8	20
312.04.06.18	6/4	1/8	8	25	14	12	20
312.04.06.14	6/4	1/4	11	29	17	12	20
312.04.08.18	8/6	1/8	8	25	14	14	20
312.04.08.14	8/6	1/4	11	29	17	14	10
312.04.08.38	8/6	3/8	11,5	29,5	20	14	10
312.04.10.18	10/8	1/8	8	26,5	14	16	10
312.04.10.14	10/8	1/4	11	30,5	17	16	10
312.04.10.38	10/8	3/8	11,5	31	20	16	10
312.04.10.12	10/8	1/2	14	34,5	24	16	10
312.04.12.38	12/10	3/8	11,5	32,5	20	18	10

**312.05**Curva maschio cilindrica  
Conical elbow male

CODICE-CODE	D	F	I	H	L	CH	CH 1	Bag Qty
312.05.04.M5	4/2,7	M5	4	15	19,5	8	8	10
312.05.04.18	4/2,7	1/8	8	17	19,5	8	8	10
312.05.05.18	5/3	1/8	8	17	21,5	8	8	20
312.05.06.18	6/4	1/8	8	17	22,5	8	12	20
312.05.06.14	6/4	1/4	11	20	22,5	10	12	10
312.05.06.38	6/4	3/8	11,5	22,5	23,5	11	12	10
312.05.08.18	8/6	1/8	8	17	22,5	10	14	10
312.05.08.14	8/6	1/4	11	20	22,5	10	14	10
312.05.08.38	8/6	3/8	11,5	22,5	24	11	14	10
312.05.10.18	10/8	1/8	8	18,5	25,5	11	16	10
312.05.10.14	10/8	1/4	11	21,5	25,5	11	16	10
312.05.10.38	10/8	3/8	11,5	22,5	25,5	11	16	10
312.05.12.38	12/10	3/8	11,5	24,5	30	14	18	10
312.05.12.12	12/10	1/2	14	28	30,5	17	18	5
312.05.15.12	15/12,5	1/2	14	28	34	17	22	5

### 312.06

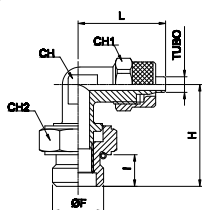
Curva femmina cilindrica  
Cylindrical elbow female



CODICE-CODE	D	F	I	H	L	CH	CH 1	Bag Qty
312.06.05.18	5/3	1/8	8	19	21,5	10	8	20
312.06.06.18	6/4	1/8	8	19	22,5	10	12	20
312.06.06.14	6/4	1/4	10,5	23	25	11	12	10
312.06.08.18	8/6	1/8	8	19	22,5	10	14	20
312.06.08.14	8/6	1/4	10,5	23	25	11	14	10
312.06.10.14	10/8	1/4	11	23,5	26	13	16	10
312.06.12.38	12/10	3/8	11,5	28	30,5	17	18	5

### 312.07

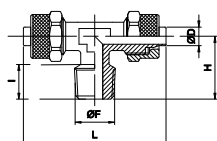
Curva maschio cilindrica girevole  
Swivel elbow male with o-ring



CODICE-CODE	D	F	I	H	L	CH	CH 1	CH 2	Bag Qty
312.07.06.18	6/4	1/8	6	22,5	22,5	8	12	14	10
312.07.06.14	6/4	1/4	8	25	23,5	10	12	17	10
312.07.08.18	8/6	1/8	6	22,5	23,5	10	14	14	10
312.07.08.14	8/6	1/4	8	25	23,5	10	14	17	10
312.07.10.14	10/8	1/4	8	25,5	23,5	11	14	17	10

### 312.09

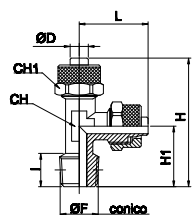
T maschio centrale  
"T" conical central male



CODICE-CODE	D	F	I	H	L	CH	CH 1	Bag Qty
312.09.05.18	5/3	1/8	8	17	43	8	8	20
312.09.06.18	6/4	1/8	8	17	45	8	12	10
312.09.06.14	6/4	1/4	11	20,5	45,5	10	12	10
312.09.08.18	8/6	1/8	8	17,5	45,5	10	14	10
312.09.08.14	8/6	1/4	11	20,5	45,5	10	14	10
312.09.08.38	8/6	3/8	11,5	22,5	48	11	14	10
312.09.10.14	10/8	1/4	11	21,5	51	11	16	5
312.09.10.38	10/8	3/8	11,5	22,5	51	11	16	5
312.09.12.38	12/10	3/8	11,5	24,5	60	14	18	5
312.09.12.12	12/10	1/2	14	28	61	17	18	5
312.09.15.12	15/12,5	1/2	14	28	68	17	22	5

### 312.10

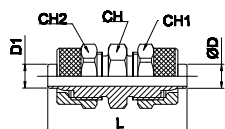
T maschio laterale  
"T" conical lateral male



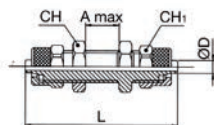
CODICE-CODE	D	F	I	H	H 1	L	CH	CH 1	Bag Qty
312.10.05.18	5/3	1/8	8	38,5	17	21,5	8	8	20
312.10.06.18	6/4	1/8	8	39,5	17	22,5	8	12	10
312.10.06.14	6/4	1/4	11	42,5	20	22,5	10	12	10
312.10.08.18	8/6	1/8	8	40,5	17,5	22,5	10	14	10
312.10.08.14	8/6	1/4	11	43,5	20,5	22,5	10	14	10
312.10.08.38	8/6	3/8	11,5	46,5	22,5	23,5	11	14	10
312.10.10.14	10/8	1/4	11	46,5	21	25,5	11	16	5
312.10.10.38	10/8	3/8	11,5	48	22,5	25,5	11	16	5
312.10.12.38	12/10	3/8	11,5	54,5	24,5	30	14	18	5
312.10.12.12	12/10	1/2	14	58,5	28	30,5	17	18	5
312.10.15.12	15/12,5	1/2	14	62	28	34	17	22	5

### 312.11

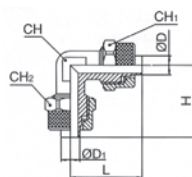
Diritto intermedio  
Straight union



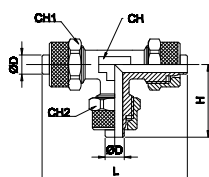
CODICE-CODE	D	D 1	L	CH	CH 1	CH 2	Bag Qty
312.11.05	5/3	5/3	28,5	8	8	8	20
312.11.06	6/4	6/4	34,5	12	12	12	20
312.11.08	8/6	8/6	35	14	14	14	10
312.11.08.06	8/6	6/4	35	14	14	12	10
312.11.10	10/8	10/8	38	14	16	16	10
312.11.12	12/10	12/10	41	17	18	18	5
312.11.15	15/12,5	15/12,5	45,5	22	22	22	5

**312.12**Passaparete intermedio  
Bulkhead union

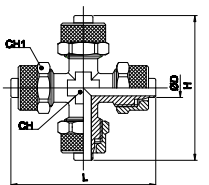
CODICE-CODE	D	CH	CH 1	L	A max	Bag Qty
312.12.05	5/3	9	8	40	8,5	20
312.12.06	6/4	14	12	48	10,5	10
312.12.08	8/6	16	14	48	10,5	10
312.12.10	10/8	17	16	50	8,5	10
312.12.12	12/10	19	18	53	8,5	5
312.12.15	15/12,5	24	22	58	8,5	5

**312.13**Curva intermedia  
Elbow union

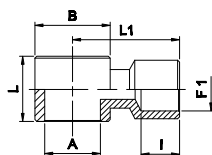
CODICE-CODE	D	D 1	H	L	CH	CH 1	CH 2	Bag Qty
312.13.05	5/3	5/3	21,5	21,5	8	8	8	20
312.13.06	6/4	6/4	21,5	21,5	8	12	12	20
312.13.08	8/6	8/6	22,5	22,5	10	14	14	10
312.13.08.06	8/6	6/4	22,5	22,5	10	14	12	10
312.13.10	10/8	10/8	25,5	25,5	11	16	16	10
312.13.12	12/10	12/10	30	30	14	18	18	5
312.13.15	15/12,5	15/12,5	34	34	17	22	22	5

**312.14**T intermedio  
"T" union

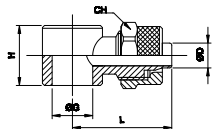
CODICE-CODE	D	D 1	H	L	CH	CH 1	CH 2	Bag Qty
312.14.05	5/3	5/3	21,5	43	8	8	8	20
312.14.06	6/4	6/4	22,5	45	8	12	12	10
312.14.08	8/6	8/6	22,5	45	10	14	14	10
312.14.08.06	8/6	6/4	22,5	45	10	14	12	10
312.14.10	10/8	10/8	25,5	51	11	16	16	5
312.14.12	12/10	12/10	30	60	14	18	18	5
312.14.15	15/12,5	15/12,5	34	68	17	22	22	5

**312.16**Croce intermedia  
Cross union

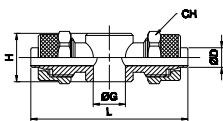
CODICE-CODE	D	H	L	CH	CH 1	Bag Qty
312.16.05	5/3	43	43	8	8	10
312.16.06	6/4	45	45	8	12	10
312.16.08	8/6	45	45	10	14	10
312.16.10	10/8	51	51	11	16	5

**312.23**Anello femmina  
Female banjo

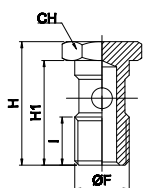
CODICE-CODE	F	F 1	I	H	L	Bag Qty
312.23.18	1/8	1/8	8	14,5	20	10
312.23.14	1/4	1/4	10	17,5	24,5	10

**312.17**Anello singolo  
Single banjo

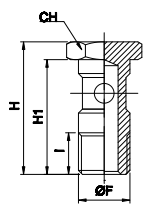
CODICE-CODE	D	F	H	L	CH 1	Bag Qty
312.17.04.M5	4/2,7	M5	9	15,8	8	10
312.17.04.18	4/2,7	1/8	14,5	21,3	8	10
312.17.05.M5	5/3	M5	9	17	8	10
312.17.05.18	5/3	1/8	14,5	22,5	8	20
312.17.06.M5	6/4	M5	9	18	9	20
312.17.06.18	6/4	1/8	14,5	24	12	10
312.17.06.14	6/4	1/4	14,5	26	12	10
312.17.08.18	8/6	1/8	14,5	24	14	10
312.17.08.14	8/6	1/4	14,5	26	14	10
312.17.10.14	10/8	1/4	14,5	27,5	16	10

**312.18**Anello doppio  
Double banjo

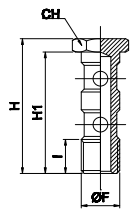
CODICE-CODE	D	F	H	L	CH 1	Bag Qty
312.18.04.18	4/2,7	1/8	14,5	42,6	8	10
312.18.05.18	5/3	1/8	14,5	45	8	10
312.18.06.18	6/4	1/8	14,5	48	12	10
312.18.06.14	6/4	1/4	14,5	52	12	10
312.18.08.18	8/6	1/8	14,5	48	14	10
312.18.08.14	8/6	1/4	14,5	52	14	10
312.18.10.14	10/8	1/4	14,5	55	16	5

**312.19**Vite cava singola  
Single screw

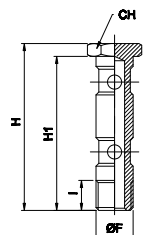
CODICE-CODE	F	I	H	H 1	CH 1	Bag Qty
312.19.M5	M5	6	18	14,5	8	10
312.19.18	1/8	8	27	23	14	20
312.19.14	1/4	11	29,5	25	17	10

**312.20**Vite cava singola lunga  
Longer single screw

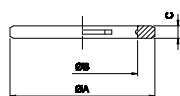
CODICE-CODE	F	I	H	H 1	CH 1	Bag Qty
312.20.18	1/8	8	31	27	14	20
312.20.14	1/4	11	33,5	29	17	10

**312.21**Vite cava doppia  
Double screw

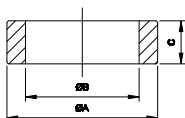
CODICE-CODE	F	I	H	H 1	CH 1	Bag Qty
312.21.18	1/8	8	43	39	14	10
312.21.14	1/4	11	45,5	41	17	10

**312.22**Vite cava doppia lunga  
Longer double screw

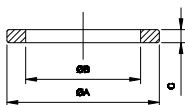
CODICE-CODE	F	I	H	H 1	CH 1	Bag Qty
312.22.18	1/8	8	56	52	14	10
312.22.14	1/4	11	58,5	54	17	10

**312.25**Rondella in plastica  
Indented nylon washer

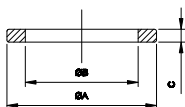
CODICE-CODE	type	A	B	C	Bag Qty
312.25.M5	M5	8	5,2	1,3	10
312.25.18	1/8	14	10	1,5	20
312.25.14	1/4	18	13,5	1,5	20

**312.28**Rondella alta in plastica  
5mm sealing ring

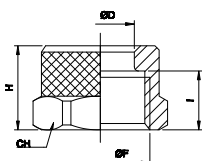
CODICE-CODE	type	A	B	C	Bag Qty
312.28.18	1/8	14	10	5	10
312.28.14	1/4	17,5	13,2	5	10

**312.26**Rondella in nylon  
Nylon washer

CODICE-CODE	type	A	B	C	Bag Qty
312.26.M5	M5	8,5	5	1,5	10
312.26.18	1/8	14	9,8	1,5	20
312.26.14	1/4	18	13,2	1,5	20

**312.27**Rondella in alluminio  
Aluminium washer

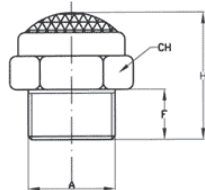
CODICE-CODE	Type	A	B	C	Bag Qty
312.27.18	1/8	14	10	1,5	20
312.27.14	1/4	17,3	13,3	1,5	20

**312.29**Dado di bloccaggio  
Locking nut

CODICE-CODE	D	F	I	H	CH	Bag Qty
312.29.04	4/2,7	M6X0,5	6	8,1	8	10
312.29.05	5/3	M7X0,75	6	8,5	8	10
312.29.06.M8	6/4	M8X0,75	6,5	9	9	20
312.29.06M10	6/4	M10X1	7,5	10,5	12	20
312.29.08	8/6	M12X1	7,5	10,5	14	20
312.29.10	10/8	M14X1	8	11,5	16	20
312.29.12	12/10	M16X1	10	13	18	10
312.29.15	15/12,5	M20X1	11	15,5	22	10

## 391.01

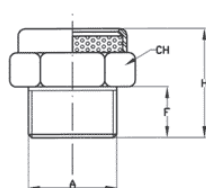
Silenziatore SFE  
SFE silencer



CODICE-CODE	A	F	H	CH	Bag Qty
391.01M5	M5	4	8	8	10
391.01.18	1/8	6	15	13	10
391.01.14	1/4	7	18	16	10
391.01.38	3/8	8	20	19	5
391.01.12	1/2	10	22	24	5

## 391.02

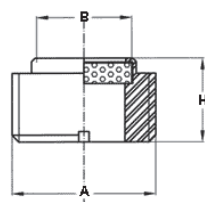
Silenziatore SEP  
SEP silencer



CODICE-CODE	A	F	H	CH	Bag Qty
391.02.M5	M5	5	12	8	10
391.02.18	1/8	6	14	13	10
391.02.14	1/4	7	17	16	10
391.02.38	3/8	8	18	19	5
391.02.12	1/2	10	20	24	5

## 391.03

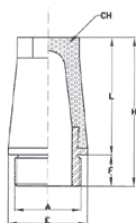
Silenziatore SP  
SP silencer



CODICE-CODE	A	B	H	Bag Qty
391.03.18	1/8	6	5	10
391.03.14	1/4	8	6	10
391.03.38	3/8	10	7	5
391.03.12	1/2	15	8	5

## 391.04

Silenziatore SET  
SET silencer

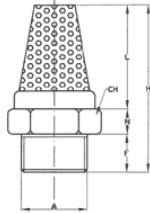


CODICE-CODE	A	E	F	L	H	CH	Bag Qty
391.04.M5	M5	8,5	5	15	20	7,5	10
391.04.18	1/8	11,5	4,5	13	17,5	8	10
391.04.14	1/4	15	6	18	24	10	10
391.04.38	3/8	19	7	24	31	13	5
391.04.12	1/2	23	8	29	37	14	5



## 391.06

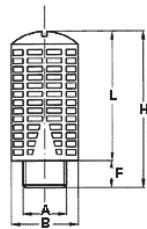
Silenziatore SBE  
SBE silencer



CODICE-CODE	A	N	F	L	H	CH	Bag Qty
391.06.M5	M5	4	4	9	17	8	10
391.06.18	1/8	8	6	15	29	13	10
391.06.14	1/4	8	7	17	32	16	10
391.06.38	3/8	7	8	25	40	19	5
391.06.12	1/2	9	9	27	45	24	5

## 391.08

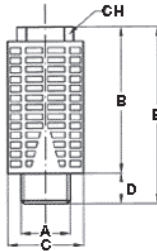
Silenziatore SPL  
SPL silencer



CODICE-CODE	A	B	F	L	H	Bag Qty
391.08.18	1/8	15	6	26,5	32,5	10
391.08.14	1/4	19,5	8	35	43	10
391.08.38	3/8	24,5	11	47	58	5
391.08.12	1/2	24,5	11	47	58	5

## 391.09

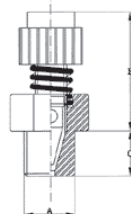
Silenziatore SPLF  
SPL-F silencer



CODICE-CODE	A	B	C	D	E	CH	Bag Qty
391.09.18	1/8	28	16	6	34	12	10
391.09.14	1/4	36	19	8	44	12	10
391.09.38	3/8	46	24	10	56	17	5
391.09.12	1/2	46	24	10	56	17	5

## 391.07

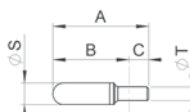
Regolatore di scarico silenziato  
SVE silencer - flow regulator



CODICE-CODE	A	B min	B max	C	Bag Qty
391.07.18	1/8	20	22	6	5
391.07.14	1/4	22	24	8	5
391.07.38	3/8	25	28	10	5
391.07.12	1/2	26	29	11	5

## 1601A

Silenziatori PE  
PE silencers



CODICE-CODE	ØD	A	B	C	ØS
1601A00064	6	45	28,5	16,5	12,5
1601A00065	8	43	23,5	19,5	13,5
1601A00072	10	57	37	20	15,6
1601A00066	12	80	58	22	18,5

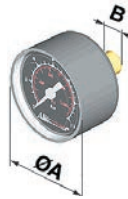
### STANDARD



CODICE-CODE	SCALA		ØA	B	CH
	BAR	PSI			
A38.00.00026*	0 ÷ 12	0 ÷ 175	40	G 1/8	14
A38.00.00055*	0 ÷ 6	0 ÷ 85	40	G 1/8	12
A38.00.00114*	0 ÷ 2,5	0 ÷ 36	40	G 1/8	12
A75.01.00010*	0 ÷ 12	0 ÷ 175	50	G 1/8	14
A75.01.00011	0 ÷ 6	0 ÷ 85	50	G 1/8	14
A95.01.00026*	0 ÷ 12	0 ÷ 175	63	G 1/4	14

\* versione personalizzata Aircomp  
\* Aircomp customized version

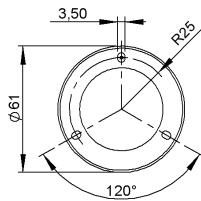
### MINI



CODICE-CODE	SCALA		ØA	B	CH
	BAR	PSI			
A35.01.00035*	0 ÷ 6	0 ÷ 87	25	G 1/8	11
A35.01.00025*	0 ÷ 12	0 ÷ 174	25	G 1/8	11

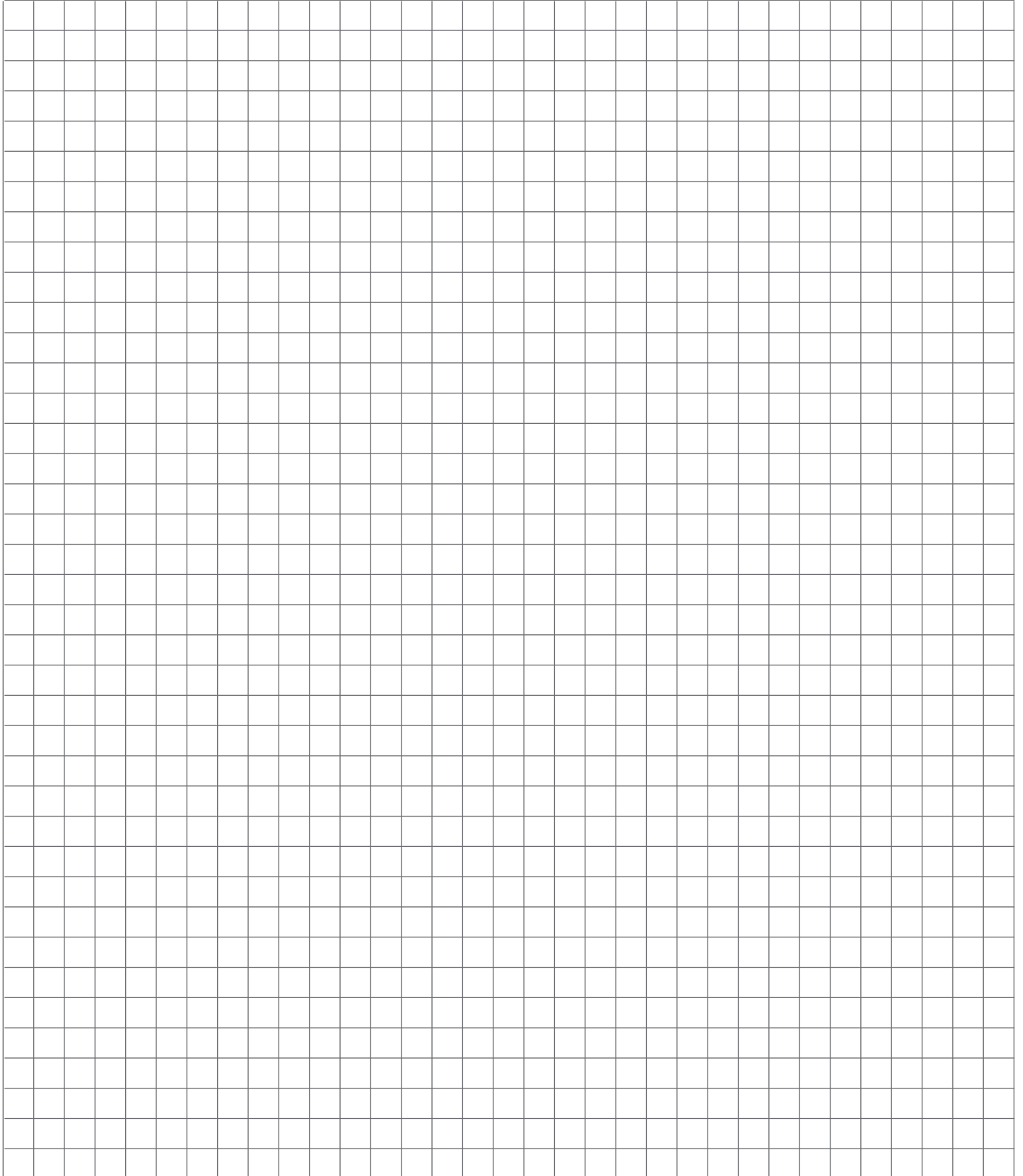
\* versione personalizzata Aircomp  
\* Aircomp customized version

### FLANGIATO



CODICE-CODE	SCALA		B
	BAR	PSI	
A38.00.00119	0 ÷ 2,5	0 ÷ 36	G 1/8
A38.00.00116	0 ÷ 6	0 ÷ 87	G 1/8
A38.01.00118	0 ÷ 12	0 ÷ 174	G 1/8

# Note



# Note

